



# STUDENT HANDBOOK

Intake 2021



**MARCH  
2022**

Faculty of Medicine and Allied Sciences  
Rajarata University of Sri Lanka



Faculty of Medicine and Allied Sciences

Rajarata University of Sri Lanka

# **STUDENT HANDBOOK**

Intake 2021

Edition: March 2022

*The information in this publication was correct at the time of printing. This Student Handbook is subjected to be reviewed and changed from time to time. This is continuously revised and updated as and when necessary and policies may change in the course of any given academic year. We, therefore, suggest that you check the latest Handbook to confirm policies and requirements in effect at any given time. Academic and examination schedules are subject to restructuring from time to time and such will be informed before the start of the respective programme.*

Edition	March 2022
Editor	Dr. D Rathish
Drawings by	Dr. CS Paththinige Dr. PHG Janaka Pushpakumara
Photographs courtesy of	Dr. CS Paththinige Prof. SB Agampodi Mr. HAJP Herath
Cover Design and Page Setting by	Dr. D Rathish
Address	Faculty of Medicine and Allied Sciences Rajarata University of Sri Lanka Jaffna Road, Saliyapura Sri Lanka, 50008
Telephone No	(+94) 252234462
Fax No	(+94) 252234464
Web address	<a href="http://www.rjt.ac.lk/med/">http://www.rjt.ac.lk/med/</a>

## Contents

	Page
Vice Chancellor's Message	1
Greetings from the Dean	2
The Declaration of Geneva	3
1. Rajarata University of Sri Lanka	4
1.1. Organizational structure of the University	4
1.2. Faculties of the University	4
2. Faculty of Medicine and Allied Sciences, Saliyapura	6
2.1. Vision of the faculty	9
2.2. Mission of the faculty	9
2.3. Location and the ground plan	10
2.4. Working hours of the faculty	10
2.5. Academic and Administrative Structure	10
2.6. Academic Program Coordinators	10
2.7. Administrative staff	14
2.7.1. Dean and Office of the Dean	14
2.7.2. Assistant Registrar	14
2.7.3. Assistant Bursar	14
2.8. Centres and Units to support academic and administrative activities	15
2.8.1. Student services Unit	15
2.8.2. Maintenance and transport Unit	15
2.8.3. Accounts branch	16
2.8.4. Examination division	16
2.8.5. Internal Quality Assurance Cell (IQAC)	16
2.8.6. Office of the Higher Degree, Research and Publication Committee (HDRPC)	17
2.8.7. Office of the Ethics Review Committee (ERC)	17
2.9. Academic Departments	18
2.9.1. Department of Anatomy	18
2.9.2. Department of Biochemistry	20
2.9.3. Department of Physiology	22
2.9.4. Department of Microbiology	23
2.9.5. Department of Parasitology	24
2.9.6. Department of Pharmacology	26
2.9.7. Department of Pathology	27
2.9.8. Department of Community Medicine	28
2.9.9. Department of Forensic Medicine	30
2.9.10. Department of Family Medicine	31
2.9.11. Department of Medicine	33
2.9.12. Department of Surgery	34
2.9.13. Department of Paediatrics	35

2.9.14.	Department of Gynaecology and Obstetrics	36
2.9.15.	Department of Psychiatry	37
2.9.16.	Medical Education Unit	38
2.9.17.	Radiology and Anesthesiology Unit	40
2.10.	Academic Supporting Centers	41
2.10.1.	Library	41
2.10.2.	Computer Laboratory	42
3.	Academic Programme	43
3.1.	Intended Learning Outcomes of the Medical Course	43
3.2.	Rules of the Medical Course	43
3.3.	MBBS Academic Programme	43
3.3.1.	Foundation course for medical studies	43
3.3.2.	English Language Teaching Program	44
3.3.3.	Year 1 and 2	45
3.3.4.	Year 3	49
3.3.5.	Year 4	50
3.3.6.	Year 5	52
3.4.	Criteria for awarding class for the MBBS Degree	53
3.5.	Criteria for awarding Gold Medals	54
3.5.1.	2 <sup>nd</sup> MBBS Examination	54
3.5.2.	3 <sup>rd</sup> MBBS Examination	55
3.5.3.	Final MBBS Examination	56
3.6.	Criteria for awarding the Dean's Award	57
3.7.	Common merit list	58
3.8.	Internship	58
4.	Rules and regulations pertaining to examinations	59
4.1.	General examination rules and regulations	59
4.2.	Examination Irregularities/Offences and Punishments	62
4.3.	Examination rules applicable to the MBBS degree course	64
5.	Discipline and conduct	66
5.1.	General rules and regulations	66
5.2.	Ragging	68
6.	Services	69
6.1.	Student counseling services	69
6.2.	Health services	69
6.3.	Accommodation	70
6.4.	Financial support and scholarships	71
6.5.	Library	71
6.6.	Reading room	71
6.7.	Internet Services and Computer Laboratory	71

6.8.	Faculty website	72
6.9.	Faculty Cell of the Department of English Language Teaching	72
6.10.	Cafeteria facilities	72
6.11.	Drinking water facilities	72
6.12.	Sports facilities	72
6.13.	Cultural activities	73
6.14.	Banking facilities	73
6.15.	Postal services	73
6.16.	Other facilities	73
6.17.	Students' union	73
6.18.	Faculty academic mentoring program	74
6.19.	Facilities for differently-abled students	74
7.	University Life	75
8.	Affiliated Hospitals and Field Practice Areas	76
8.1.	Teaching Hospital, Anuradhapura	76
8.2.	Field Practice Areas, Hospitals and Centers	79
9.	Preparedness and response for COVID-19 outbreak	80
Annexure 1	Application form for special leave	81
Annexure 2	Prohibition of Ragging and Other Forms of Violence in Educational Institutions Act, No. 20 of 1998	82

## Vice Chancellor's Message



It is my pleasure to welcome you to the Faculty of Medicine and Allied Sciences, Rajarata University of Sri Lanka. I wish to congratulate you, my precious students, for your hard work, which successfully propelled you through the highly competitive admission process into the university system of Sri Lanka. It should be emphasized that you are among the most fortunate group of students to enter the Rajarata University of Sri Lanka, for higher studies in the field of medicine. Since you have gained this rare opportunity, it is your prime duty to fulfill your higher educational objectives using all the resources available at Rajarata University of Sri

Lanka. You are starting a new chapter in your life. Feelings of uncertainty is normal and you might feel overwhelmed by some of the difficulties faced during this new journey. But I know that you will adapt quickly, and soon claim Rajarata University of Sri Lanka as your home away from home. I further extend my gratitude to parents and guardians for having entrusted us with the higher education of their children.

We, the members of the university, are delighted that you chose to join us in this academically inspiring and socially stimulating environment. The Rajarata University of Sri Lanka has risen to prominence over its twenty-five years of existence due to the contribution of dedicated staff, the enthusiasm of graduate and undergraduate students, the passion of the alumni, and the supporters from all walks of life in the district of Anuradhapura. However, more importantly, the academic and administrative staff, have played an enormous role in ensuring that our university remains the fountain of knowledge it is today. We are proud of our excellent collection of faculties and their contributions to knowledge creation through their teaching, research and publication.

The past two years have been tough, and your experience was considerably different from students who enrolled before COVID-19. And, we are aware that the pandemic will still have an effect on how we do things in the foreseeable future. You might have to face difficult scenarios, and you will experience highs and lows. Take these challenges as opportunities to grow and learn. I urge you to take the advantage of our university to reach your fullest potential and to make meaningful contributions to society. Also, make use of the sporting and recreational facilities available at the university premises to improve your physical and mental health during your rigorous academic activities. And if you need help, simply reach out and ask. Remember, you are not alone at Rajarata University of Sri Lanka because we always move forward together.

It is my pleasure to wish you a memorable and enjoyable experience during your stay at Rajarata University of Sri Lanka.

Prof. (Mrs.) GAS Ginigaddara (BSc, MPhil, PhD)  
Vice Chancellor  
Rajarata University of Sri Lanka, Mihintale, Sri Lanka

## Greetings from the Dean



On behalf of the faculty staff and students, I am excited to welcome you to the Faculty of Medicine and Allied Sciences, Rajarata University of Sri Lanka. I would like to congratulate you for successfully overcoming many challenges, particularly under the pandemic situation, and making your way to a new chapter of your life to pursue your higher education in the field of medicine. You have worked hard, persevered, passed your exams at school, and today you are a university student. It is a privilege to enter a medical school, within which you will transform yourself to be a clinician, researcher, teacher, and administrator. The medical profession expects you to hold the highest degree of personal responsibility and integrity in all instances.

During this period of training, you are also expected to groom yourself to be a role model for society.

The faculty is poised to provide you with resources that support your academic journey and personal well-being. Our students are the heart of the institution, and we are well equipped to provide you with an outstanding learning experience to achieve your dreams. The state-of-the-art infrastructure and dedicated staff will guarantee you high-quality medical training. Our faculty is a melting pot for students from all parts of the country, and as such, it has a vibrant multicultural environment. I would ask you to make the best use of this opportunity to know your fellow students representing heterogeneous social, cultural, and linguistic backgrounds. Thus, you will have the opportunity to live in harmony, respecting each other's socio-cultural norms.

As you have conquered a tough examination for university admission, I am sure you have the necessary preparation and determination to overcome the academic rigours of this faculty. We are here to facilitate your endeavours to excel both in academic and extra-academic activities. Therefore, it is your primary responsibility to make maximum use of the facilities available and enjoy undergraduate life. This will help us produce caring, knowledgeable, and balanced doctors for society. Further, to enhance your training, the student handbook gives a comprehensive account of the faculty policies and programs relevant to your day-to-day activities. I recommend you to go through this document carefully and use this as a reference document at all times. Moreover, I encourage you to liaise closely with the staff and the administration, especially during the present pandemic. We will continue to follow the necessary protocols for the health and safety of staff and students and monitor the COVID-19 situation.

Medical education does not end at graduation. Therefore, you should develop the skill of lifelong learning during your stay at the faculty. I cannot wait to see you around our beautiful faculty, and I wish you the very best in your academic endeavours.

Prof. SB Agampodi (MBBS, MSc, MD, MPH, FRSPH)  
Dean, Faculty of Medicine and Allied Sciences  
Rajarata University of Sri Lanka, Saliyapura, Sri Lanka



## The Declaration of Geneva

The Declaration of Geneva is one of the World Medical Association's (WMA) oldest policies adopted by the 2<sup>nd</sup> General Assembly in Geneva in 1948. It builds on the principles of the Hippocratic Oath, and is now known as its modern version. It also remains one of the most consistent documents of the WMA. With only very few and careful revisions over many decades, it safeguards the ethical principles of the medical profession, relatively uninfluenced by zeitgeist and modernism. The Oath should not be read alone, but in parallel with the more specific and detailed policies of the WMA especially the International Code of Medical Ethics, which followed the Declaration of Geneva as early as 1948.

*Adopted by the 2<sup>nd</sup> General Assembly of the World Medical Association, Geneva, Switzerland, September 1948 and amended by the 22<sup>nd</sup> World Medical Assembly, Sydney, Australia, August 1968 and the 35<sup>th</sup> World Medical Assembly, Venice, Italy, October 1983 and the 46<sup>th</sup> WMA General Assembly, Stockholm, Sweden, September 1994 and editorially revised by the 170<sup>th</sup> WMA Council Session, Divonne-les-Bains, France, May 2005 and the 173<sup>rd</sup> WMA Council Session, Divonne-les-Bains, France, May 2006 and amended by the 68<sup>th</sup> WMA General Assembly, Chicago, United States, October 2017.*

### The Physician's Pledge

- AS A MEMBER OF THE MEDICAL PROFESSION:
- I SOLEMNLY PLEDGE to dedicate my life to the service of humanity;
- THE HEALTH AND WELL-BEING OF MY PATIENT will be my first consideration;
- I WILL RESPECT the autonomy and dignity of my patient;
- I WILL MAINTAIN the utmost respect for human life;
- I WILL NOT PERMIT considerations of age, disease or disability, creed, ethnic origin, gender, nationality, political affiliation, race, sexual orientation, social standing or any other factor to intervene between my duty and my patient;
- I WILL RESPECT the secrets that are confided in me, even after the patient has died;
- I WILL PRACTISE my profession with conscience and dignity and in accordance with good medical practice;
- I WILL FOSTER the honour and noble traditions of the medical profession;
- I WILL GIVE to my teachers, colleagues, and students the respect and gratitude that is their due;
- I WILL SHARE my medical knowledge for the benefit of the patient and the advancement of healthcare;
- I WILL ATTEND TO my own health, well-being, and abilities in order to provide care of the highest standard;
- I WILL NOT USE my medical knowledge to violate human rights and civil liberties, even under threat;
- I MAKE THESE PROMISES solemnly, freely, and upon my honour.

World Medical Association: <https://www.wma.net/policies-post/wma-declaration-of-geneva/>

# 1. RAJARATA UNIVERSITY OF SRI LANKA



Rajarata University of Sri Lanka was established on 7<sup>th</sup> November 1995 under section 21 of the University Act No.16 of 1978 by amalgamating the resources of the affiliated University colleges in the Central, North Western and North Central Provinces. The University is located at Mihintale, a World Heritage Site, 14 km from the city of Anuradhapura and a well-known seat of learning several centuries before the beginning of the Christian era.

## 1.1 Organizational structure of the University

The Vice-chancellor is the academic and administrative Head of the university and he is assisted by Deans of the faculties, Registrar and Bursar (Figure 1; page 5).

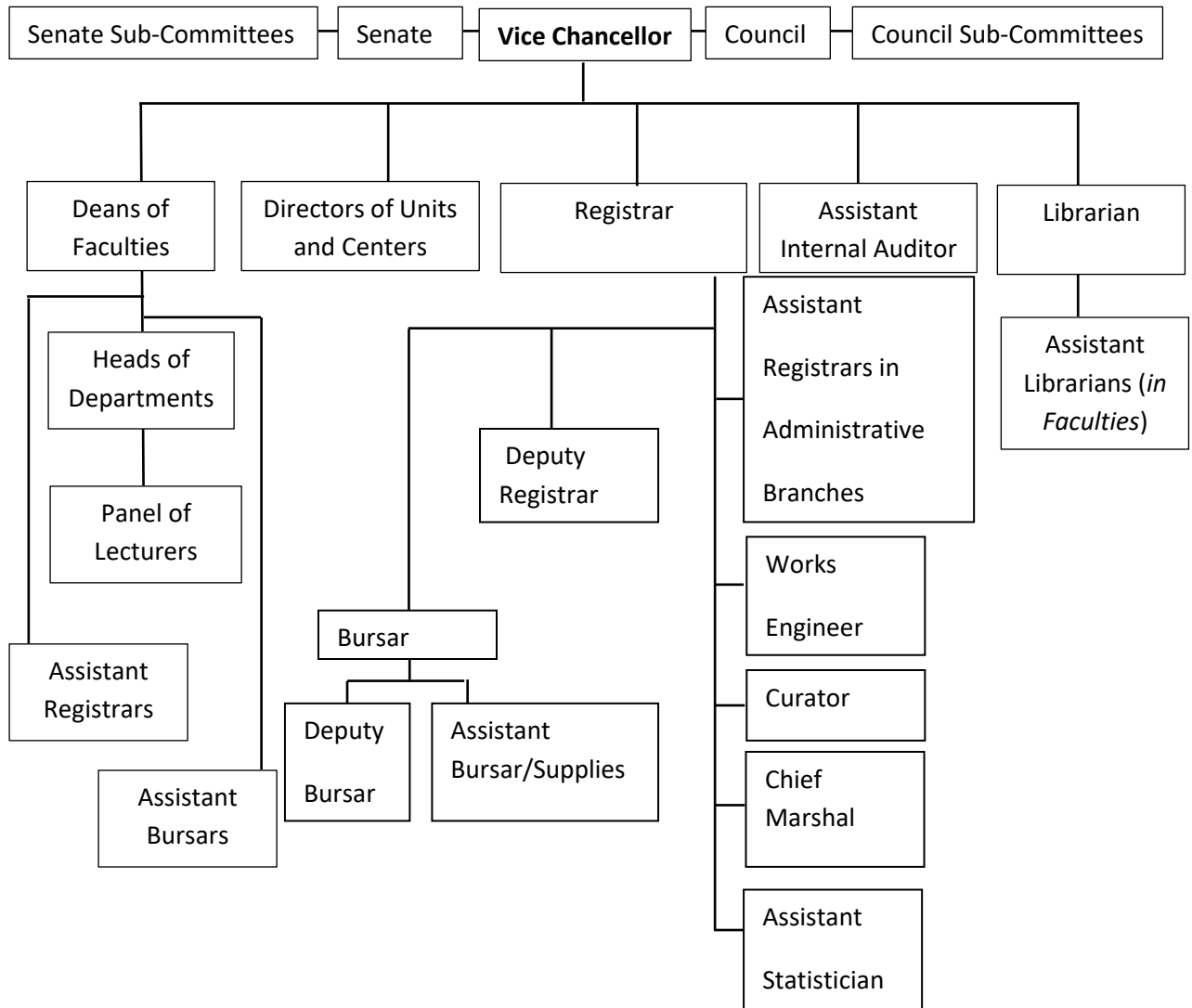
Chancellor	Ven. Pandith Ethalwatunuwawe Gnanathilake Thero (BA Hons, MA)
Vice Chancellor	Prof. (Mrs.) GAS Ginigaddara (BSc, MPhil, PhD)
Acting Registrar	Mr. NCS Senaka (BSc, PGDM)
Registrar	Mr. AMGB Abeysinghe (BA (sp), PGDM, MA) (on sabbatical leave)
Bursar	Mr. DD Upananda (BCom (Sp), PGD (B. Admin), MBA)

## 1.2 Faculties of the University

The University consists of six faculties each headed by a Dean who is the academic and administrative Head of each faculty.

- Faculty of Agriculture (Puliyankulama)
- Faculty of Applied Sciences (Mihintale)
- Faculty of Management Studies (Mihintale)
- Faculty of Medicine and Allied Sciences (Saliyapura)
- Faculty of Social Sciences and Humanities (Mihintale)
- Faculty of Technology (Mihintale)

## Organizational structure of the University



**Figure 1**

## 2. FACULTY OF MEDICINE AND ALLIED SCIENCES, SALIYAPURA



The Faculty of Medicine and Allied Sciences (FMAS), Rajarata University of Sri Lanka (RUSL) was established in July 2006, under section 21 of the University Act No.16 of 1978. The first batch of medical undergraduates in FMAS included 171 students from 22 districts and was registered on 11th September 2006. Since then, fifteen batches have been admitted to the faculty. At present, FMAS enrolls around 210 undergraduates per batch for the MBBS degree programme. Nine batches of students have graduated to date and serving the country as medical doctors. Of these graduates, around 150 are enrolled in postgraduate programmes by 2022. The faculty received a B grade in January 2020 in the programme review conducted by the Quality Assurance Council of the University Grants Commission, Sri Lanka. Considering its short history compared to other faculties of medicine in Sri Lanka which have a long year of service, the above achievement of the faculty is creditable.

The faculty is situated at a unique geographical location, in Anuradhapura which is the largest district in Sri Lanka. Anuradhapura has a rich history of more than 2500 years and was the capital of Sri Lanka from the 4th century BC until the beginning of the 11th century AD. During the above period, it remained one of the most stable centers of political power and urban life in South Asia. Here lie many archeological sites including those of ancient medical heritage and the sacred city of Anuradhapura which is a UNESCO world heritage site. The location of the faculty is about 8 km from the Teaching Hospital Anuradhapura (THA) and 13 km from the main University at Mihintale. Academic departments teaching the first four years of the undergraduate medical programme are located in Saliyapura premises, and the five departments teaching for the final year are located within the THA. The work on the para-clinical building was commenced in 2008 and the relevant departments were established at the new complex in May 2010. And, the building for the professorial units, wards, clinics, and teaching areas was commenced in 2009 and completed in February 2012. Further, the work on the new pre-clinical building commenced in 2019 and it is expected to be complete by the end of September 2022.

The clinical training programme of the faculty is primarily carried out in THA, the third-largest hospital in the country. THA is equipped with modern diagnostic and management facilities. The academic staff of all clinical departments provides services as honorary consultants at THA. In addition, Provincial General Hospital Polonnaruwa, District General Hospital Matale, Base Hospital Dambulla, and Base Hospital Thambuththegama are also involved in 3rd year and 4th training programmes. The community practice area of the faculty consists of a socio-economically diverse population that enables comprehensive primary and preventive care training. The above training is linked with extensive community services to ensure that students get hands-on experience in public health.

The Dean is the academic and administrative head of the faculty and he is assisted by the Heads of the Departments, Librarian, Assistant Registrar, and Assistant Bursar. At present, FMAS conducts the undergraduate programme offering Bachelor of Medicine and Bachelor of Surgery (MBBS). The undergraduate course is broadly divided into three phases depending on the subject content; Preclinical, Paraclinical, and Clinical. Each of the above phases of the study is coordinated by an academic appointed by the Faculty Board. The faculty comprises seventeen academic departments and units. The Pre-clinical phase of the study is carried out by the departments of Anatomy, Biochemistry, and Physiology. The Para-clinical departments include the departments of Community Medicine, Family Medicine, Forensic Medicine, Microbiology, Parasitology, Pathology, and Pharmacology. The Clinical programme is carried out by the departments of Gynaecology and Obstetrics, Medicine, Paediatrics, Psychiatry, and Surgery. Further, there are two academic units; the Medical Education Unit which provides the support and guidance for continuing professional development of the staff and for curriculum-related matters, and the Radiology and Anaesthesiology Unit which supports undergraduate training and patient care services of professorial unit THA.

The MBBS programme includes 10 semesters and is conducted over a period of five years. It consists of four main phases; Foundation for medical studies, Pre-clinical, Para-clinical, and Clinical phases. The foundation course is designed to make students familiar with the university setting, to improve their life skills and learning skills, and to make them aware of the basic aspects of medical ethics and professionalism. Furthermore, the lessons are basically studied with Medical English as well as General English focusing more on IELTS Examination. During the pre-clinical phase, the relevant departments provide the guidance to acquire fundamental knowledge and the skills in assessment of the normal structure and functions of the human body and the basis of dysfunction. The para-clinical phase of the MBBS course deals with the theoretical and practical aspects of abnormal structure and function of the human body and the evaluation and management of those. The clinical phase provides comprehensive clinical training to prepare the graduates to deliver safe and efficient care to the patients.

At the end of the MBBS programme of FMAS, RUSL, the graduate is expected to possess knowledge and competencies regarding, scientific knowledge for medical practice, skills essential for medical practice, ethics, attitudes and professionalism, leadership, interpersonal relationships and teamwork, research, evidence-based medicine, and problem-solving, health promotion and social, cultural and environmental perspectives on health and continuing professional development. The programme is congruent with the vision and the outcomes of the faculty and complies with the level descriptors of the SLQF level-7 and SBS in Medicine. The medical curriculum underwent two major revisions in 2014 and 2016. In 2014, the faculty revised its pre-clinical medical curriculum from a traditional subject-based to a system-based curriculum with horizontal and vertical integration. Personal and Professional Development and Research in Medicine components were introduced as separate streams, in 2016 considering the national needs and global trends in medicine and the requirements of relevant professional bodies. Family Medicine has been introduced as a separate discipline to the MBBS program since February 2021. The MBBS programme consists of a set of core streams/modules that are logically arranged in three phases allowing the steady and step-wise progression of the undergraduates. The MBBS programme adopted the Outcome-based Education Student-Centered

Learning (OBE-SCL) approach. The Intended Learning Outcomes (ILOs) of the different disciplines/modules/streams including the clinical and field appointments are aligned with the faculty outcomes, as well as with the teaching-learning and assessment processes enabling the achievement of all the outcomes by the time of graduation.

The Medical Library and Computer Laboratory provide services to achieve a higher quality medical education. The faculty has been using an online Learning Management System (LMS) to ensure an effective teaching-learning environment. The examinations are conducted by the Examinations division in collaboration with the respective departments. Student Services Unit provides a wide range of services for the convenience of the students by working in collaboration with several centers and units of the faculty. Further, the faculty consists of many centers and unit that support academic and administrative activities including the Maintenance and Transport Unit, Accounts Branch, Internal Quality Assurance Cell, Office of the Higher Degrees, Research and Publication Committee, Office of the Ethics Review Committee, Skills Lab, Faculty Cell of the Department of English Language Teaching, Animal House and Research Laboratories. Moreover, there are the following additional services for the staff and students: student counselling services, health services, accommodation, financial support and scholarships, reading room, cafeteria facilities, drinking water facilities, sports facilities, cultural activities, banking facilities, postal services, faculty academic mentoring program, photocopy and printing facilities, the air-conditioned auditorium at the professorial unit, and facilities for differently-abled students.

The faculty consists of around 60 permanent academic staff and 90 non-academic staff. The Faculty Board of FMAS, RUSL consists of the Dean of the faculty, all permanent Senior Professors, Professors, Senior Lecturers and Lecturers of the Departments of Study comprising the faculty, two members elected by the Lecturers (Probationary) of the faculty from among such Lecturers; two members of the permanent staff attached to the faculty and who are imparting instructions, other than those referred above, elected from among such staff members; two students elected by the students of the faculty from among their number; and three persons not being members of the staff of the University elected by the Faculty Board from among persons of eminence in the areas of study relevant to the faculty. Also, the Senior Assistant Registrar is in attendance. Further, the Probationary Lecturers, and the Assistant Bursar attend the Faculty Board meeting of the FMAS on the invitation. The board meets monthly to exercise, perform and discharge its powers, duties, and functions.

Quality assurance is an integral part of FMAS in order to ensure the smooth functioning of its core processes such as teaching/learning, research and outreach activities. All departments and units of the FMAS have taken several initiatives to internalize most of the best practices with the aim of improving the quality of undergraduate medical education. The core best practices are adopted by all the departments. Quality assurance is an agenda item at departmental and faculty board meetings. With the establishment of the Internal Quality Assurance Cell (IQAC), with a clear term of reference, primary functions of quality enhancement/ assurance are now administered with greater efficiency. The faculty IQAC conducts regular programme evaluation by internal monitoring and review and through tracer study of graduates, and this information will be used for the continuous improvement of the programme. Also, a faculty policy document for the management of the programme was developed. The faculty policies promote the academic staff to utilize the updated evidence-based

knowledge and innovative technologies in teaching-learning activities. The programme guides the students and provides progressively increasing opportunities for the development of self-directed learning, collaborative learning, creative and critical thinking, life-long learning, interpersonal communication, and teamwork, through a variety of teaching-learning strategies. The faculty ensures that the assessments are focused on preparing the graduates to function as effective medical professionals. The faculty ensures that the rules, regulations, by-laws, and guidelines about the assessment procedures are explicit, transparent, fair, and consistent.

The faculty has taken several initiatives to train both academic and non-academic staff members. Continuous professional development of staff is warranted by providing opportunities and financial assistance for induction training and postgraduate degree programmes, research projects, local and international seminars, workshops, and conferences. Further, students are provided with a well-resourced library and ICT facilities to widen their knowledge. In addition, FMAS has recognized student-staff interactions as a crucial element for higher education. Hence, the faculty encourages student participation in relevant administrative decision-making. Student complaints and feedback are always considered in administrative decision making and relevant steps are taken to offer academic and technical support and improve the learning environment of students. The faculty adopts diverse student-friendly academic teaching-learning activities such as group work, LMS discussions, clinical case discussions, and fieldwork. Further, ethnic harmony and cohesion among students are encouraged through incorporating multicultural activities.

The postgraduate training of the faculty includes MPhil and PhD as degree offering programmes. In addition, six departments of the faculty are recognized by the Post Graduate Institute of Medicine as postgraduate training centers. The faculty has a robust research programme with high-caliber scientists with several global experts in their fields. The faculty continually strives to uplift the standards of the institution, by paving the way for students to reach their full potential. The faculty has strengthened its human resources and other infrastructure facilities during the past decade. Throughout the short history of the faculty, our graduates have secured high ranks in the common merit order and excelled in various postgraduate courses. Moreover, our undergraduates have brought pride to the faculty through their achievements in extracurricular activities.

## **2.1 Vision of the faculty**

To be the premier institution in Sri Lanka in training of health professionals.

## **2.2 Mission of the faculty**

Faculty of Medicine and Allied Sciences is committed to train health professionals with values of highest ethical conduct and mutual respect in an environment of excellence. This would involve a holistic education in preventive and curative medicine and research and embody a desire for continuing education while recognizing responsibility for betterment of the health of people at all levels in Sri Lanka.

## 2.3 Location and the ground plan

The faculty is located in Anuradhapura – Jaffna main road, about 7 km from Anuradhapura city and is around 15 km from the main campus in Mihintale (Figure 2 and Figure 3; page 11-12).

## 2.4 Working hours of the faculty

A working week of the faculty is from Monday to Friday, and the administrative office and departments are open from 8.00 a.m. to 4.15 p.m. on these days. Lectures are conducted from 8.00 a.m. to 5.00 p.m. on weekdays. Clinical training time schedules vary with the appointment.

## 2.5 Academic and Administrative Structure

The Dean is the academic and administrative Head of the faculty and he is assisted by the Heads of the departments, Assistant Registrar and Assistant Bursar (Figure 4; page 13).

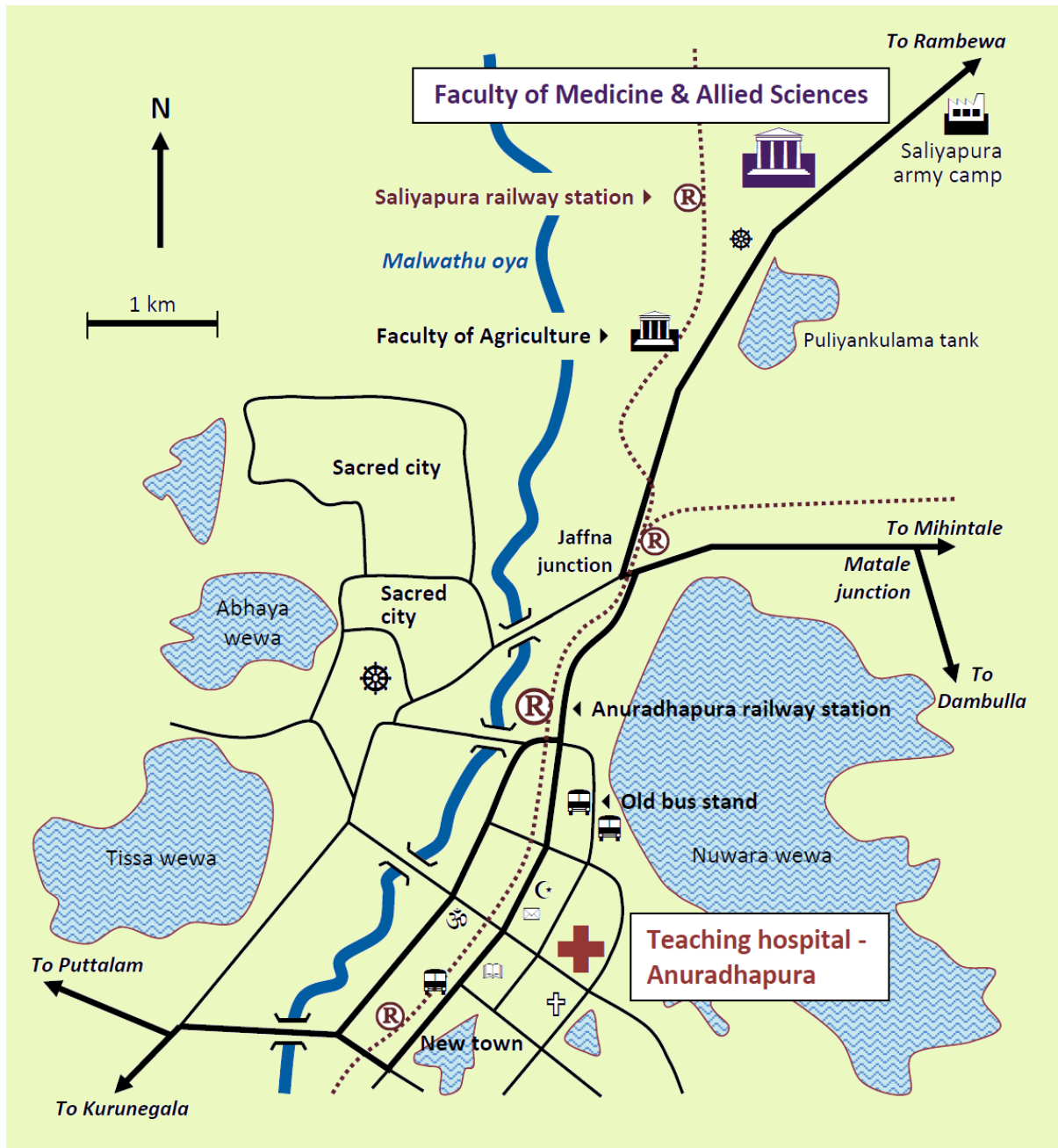
## 2.6 Academic Program Coordinators

Bachelor of Medicine and Bachelor of Surgery (MBBS) undergraduate course broadly divided into three programs depending on the subject content; Preclinical, Paraclinical and Clinical. Each of the program coordinated by a coordinator appointed by the Faculty Board.

<b>Preclinical coordinator</b>	Dr. CS Paththinige (MBBS, MSc, PG cert in Medical Education)
<b>Paraclinical coordinator</b>	Prof. NKA Silva (MBBS, MPhil, PhD, FRSPH, FRCPEdin)
<b>Clinical coordinator</b>	Dr. SPB Thalgaspitiya (MBBS, MS, Diploma in laparoscopic surgery (IRCAD France) FMAS (India))



## Location of Faculty of Medicine and Allied Sciences – Saliyapura and Teaching Hospital – Anuradhapura



(Figure 2)

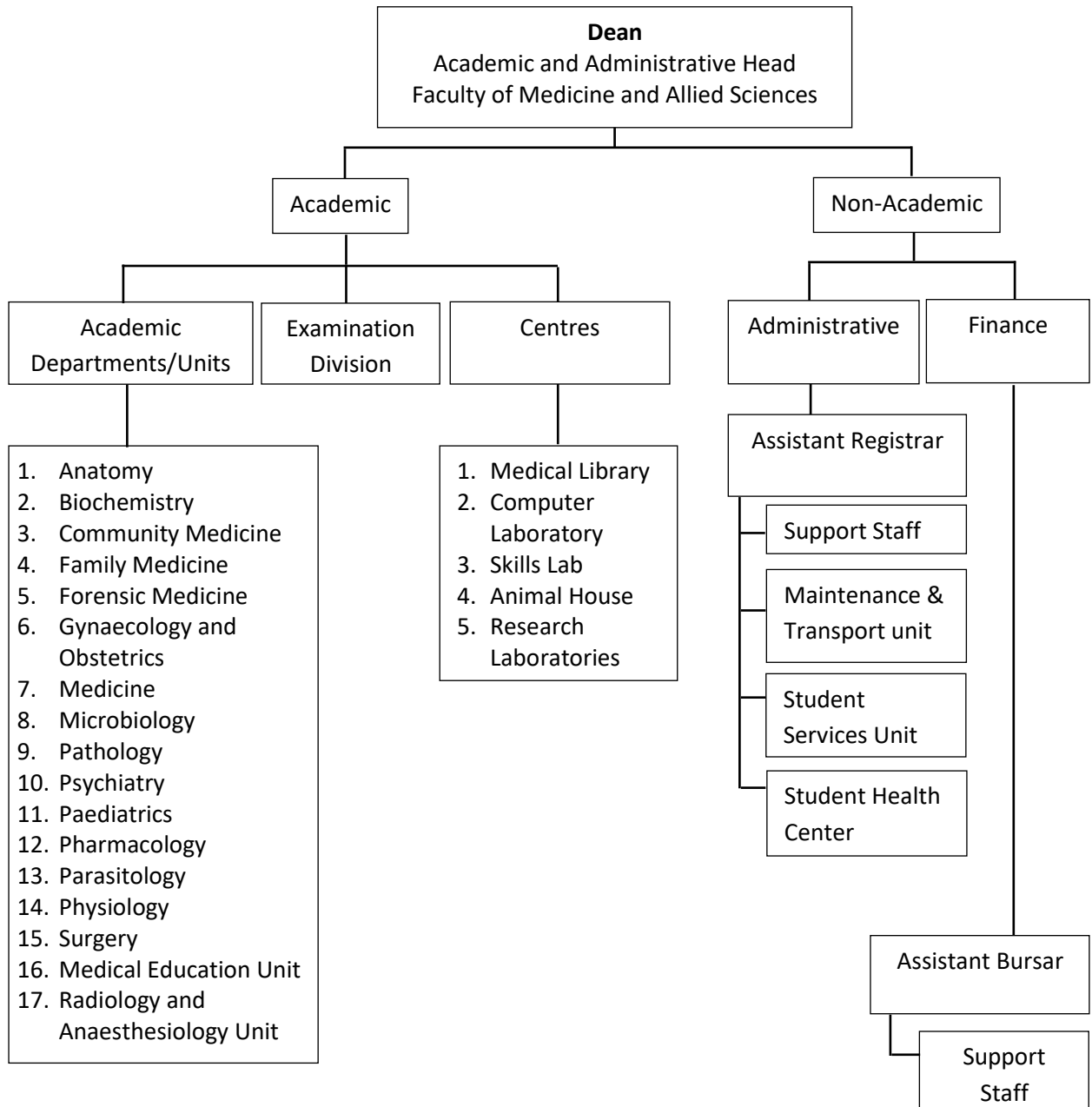
## Ground Plan of Faculty of Medicine and Allied Sciences



(Figure 3)

- |             |  |
|-------------|--|
| <b>A</b>    | <b>Administration building</b><br><u>Ground floor:</u> Accounts branch, Student services unit, Tutorial rooms<br><u>First floor:</u> Dean's office, Board room, Examinations division  |
| <b>B</b>    | <b>Pre-clinical building</b><br><u>Ground floor:</u> Physiology laboratory, Histology laboratory, Dissection Hall<br><u>First floor:</u> Department of Anatomy (Office), Department of Physiology (Office)   |
| <b>C</b>    | <b>Para-clinical building</b><br><u>Ground floor:</u> Department of Forensic Medicine, Department of Parasitology, Department of Pharmacology, Department of Microbiology, Students' Health Center, Main research laboratory<br><u>First floor:</u> Department of Biochemistry, Department of Community Medicine, Department of Pathology, Prof. DJ Weilgama Laboratory<br><u>Second floor:</u> Prof. SarathEdirisinghe Auditorium, Tutorial rooms/ Examination Hall, Medical Education Unit, Department of Family Medicine, Faculty Cell of the Department of English Language Teaching, Internal Quality Assurance Unit, Higher Degrees, Research and Ethic Review Committee office, AV unit, Research laboratories, Staff common room |
| <b>D</b>    | <u>Ground floor:</u> Lecture Hall, <u>First floor:</u> Prof. PAJ Perera Laboratory   |
| <b>E</b>    | Prof. Malkanthi Chandrasekara auditorium   |
| <b>F</b>    | Computer Laboratory  |
| <b>G</b>    | Main Library   |
| <b>H</b>    | Cafeteria, Students' common room   |
| <b>I</b>    | New lecture hall   |
| <b>J</b>    | Students' hostel ( <i>Wijayabahu Hostel</i> )  |
| <b>K</b>    | Students' hostel   |
| <b>L</b>    | Pavilion, gymnasium  |
| <b>M</b>    | Milk bar   |
| <b>N</b>    | Cadaver preservation and storage room  |
| <b>O</b>    | Arts room  |
| <b>P</b>    | Vehicle Park   |
| <b>S</b>    | Security office  |
| <b>T</b>    | Toilets  |
| <b>AH/M</b> | Animal House & Maintenance Unit  |
| <b>Ge</b>   | Generator room   |
| <b>BOC</b>  | Bank of Ceylon- Medical Faculty branch ATM   |
| <b>SQ</b>   | Staff quarters   |
| <b>PO</b>   | Post Office  |
| <b>Sr</b>   | Shrine room  |

## Academic and Administrative Structure of Faculty of Medicine and Allied Sciences



*(Figure 4)*

## 2.7 Administrative Staff

### Dean and Office of the Dean

**Prof. S.B. Agampodi** (MBBS, MSc, MD, MPH, FRSPH)

Dean / Chair Professor of Community Medicine

Faculty of Medicine and Allied Sciences

Rajarata University of Sri Lanka, Saliyapura

Phone: +9425 2234462, Fax: +9425 2234464

### Office of the Dean

Phone: +9425 2226276

Fax: +9425 2234464

Email: deanoffice@med.rjt.ac.lk

### Clerical staff

Ms. T Amirthavarshani	English stenographer
Ms. HTI Anuradhi	Management assistant (temporary lecturers, non-academic staff)
Ms. ARTK Nawarathna	Management assistant
Ms. HMHEK Hellarawa	Management assistant

### Support staff

Mr. FFSL Telin	In charge of Professorial Unit auditorium
Ms. MLL Jayasundara	Supportive staff
Mr. RGDN Galappaththi	Work Aid

### Assistant Registrar

**Mrs. K.S.K. Herath** (BSc, MSc)

Assistant Registrar, Faculty of Medicine and Allied Sciences

Rajarata University of Sri Lanka, Saliyapura

Phone: +9425 2234463

### Assistant Bursar

**Mr. DMR Samantha** (HN Dip in Acc-SLIATE)

Assistant Bursar, Faculty of Medicine and Allied Sciences

Rajarata University of Sri Lanka, Saliyapura

Phone: +9425 2226253

## 2.8 Centres and Units to support academic and administrative activities

### 2.8.1 Student Services Unit

The uppermost function of the Student Services Unit (SSU) is focusing on the creation of a device to facilitate the students of the FMAS to achieve a higher quality medical education. SSU of FMAS provides a wide range of services for the convenience of the students to achieve the above objective. Therefore, it works in collaboration with several centers and units of the faculty. SSU provides following services:

- Distribution of student handbooks and record books
- Arranging and distribution of student identity cards
- Maintaining personal files of the students
- Preparing students' albums
- Preparing and issuing studentship letters
- Issuing progress reports
- Coordinating *Mahapola* scholarship and bursary related activities
- Coordinating *Saubhagya* scholarship related activities
- Coordination of arrangements related to clinical appointments
- Preparing and issuing of student registers for clinical appointments
- Coordination of activities related to student hostel facilities
- Display clinical schedule of the faculty in the notice board
- Calling entry forms and issuing the admissions for all main examinations

**Staff** Ms. WDTN Seneviratne  
Mr. JMCP Ranathunga

**Contact Info.** Phone: +9425 2226276 (Ext: 3571)

### 2.8.2 Maintenance and Transport Unit

Conducting and coordinating maintenance work of the faculty and provision of transport services for students\* and staff\* are the main functions of the unit (\*with prior approval from the SAR).

**Staff**

Ms. AACD Abeysinghe	Management Assistant (transport and canteen)
Mr. HGS Pushpalal	In charge of Maintenance Unit
Mr. RM Jayamaha	Supportive staff/Maintenance Unit
Mr. AVC Nishantha	Supportive staff
Mr. IASC Illangakoon	Driver/Faculty bus
Mr. HMG Munasinghe	Driver/Faculty car
Mr. WKS Premakumara	Driver/Faculty car

### 2.8.3 Accounts Branch

The accounts branch coordinate and conduct all the finance related services of the faculty.

#### Staff

Ms. TTSD Fernando	Staff Assistant
Mr. BMA Basnayake	Shroff
Mr. JH Kodikara	Store Keeper
Mr. HCS de Silva	Management Assistant (Book Keeper)
Ms. PHMDK Herath	Supportive staff
Ms. RMLMKR Bambaragama	Supportive staff

**Contact Info.** Phone: +9425 2226253

### 2.8.4 Examinations Division

During the MBBS programme, a student has to appear in about 40 examinations. Therefore, the faculty organizes about 40 examinations and approximately 12 repeat examinations for each batch of students. Because of the physical separation from the main University location and for other reasons Faculty of Medicine and Allied Sciences is conducting the exams separately. Faculty of Medicine and Allied Sciences has a separate Examinations Division, which is under a Director of Examinations who shall be appointed by the Dean and approved by the Faculty Board. The Examinations Division of the faculty is organizing the examinations with the assistance of the departments.

**Director/Examinations:** Dr. PHG Janaka Pushpakumara (MBBS, PgD(Psych), MPhil)

**Management Assistant:** Ms. HMHS Nawarathna  
Ms. HTI Anuradhi

**Contact Info.** Phone: +9425 2226276 (Ext: 3573)  
Email: exams@med.rjt.ac.lk

### 2.8.5 Internal Quality Assurance Cell (IQAC)

In recognition of the importance of quality enhancement of the University education in a formal, transparent and accountable manner, and responding to the global and local trends in quality assurance, FMAS established its IQAC. All quality-related aspects of the academic programme, research, services and environment of the faculty come under the wings of IQAC. It represents all stakeholders for quality within the faculty, including academic staff, medical students, administrative staff and non-academic staff. It implements corrective actions or makes recommendations to uplift the quality of the faculty where necessary.

**Coordinator** Dr. PHG Janaka Pushpakumara (MBBS, PgD (Psych), MPhil)

**Secretary** Dr. Subhashinie Senadheera (BSc Hons, PhD)

**Contact Info.** Email: iqac@med.rjt.ac.lk

## 2.8.6 Office of the Higher Degrees, Research and Publication Committee (HDRPC)

FMAS offers the following higher degrees in selected areas of study:

Doctoral Degrees:	1. Doctor of Science (DSc) 2. Doctor of Philosophy (PhD)
Master Degrees	1. Master of Philosophy (MPhil)
<b>Chairperson</b>	Prof. NKA Silva (MBBS, MPhil, PhD, FRSPH, FRCPEdin)
<b>Secretary</b>	Dr. Subhashinie Senadheera (BSc Hons, PhD)
<b>Staff</b>	Mr. LADHR Wijayathunga (BMS in HRM, MHRM, AHRP)

**Contact Info.** Phone: +94 252053633 Email: [hdrpc@med.rjt.ac.lk](mailto:hdrpc@med.rjt.ac.lk)

## 2.8.7 Office of the Ethics Review Committee (ERC)

ERC provides independent guidance, advice and decision on health research or other specific research protocols involving human subjects. The primary objectives of the ERC/FMAS/RUSL are to protect the physical, psychological, social welfare, rights, dignity and safety of human participants used in research, while taking into account the interests and needs of researchers and the integrity of FMAS/RUSL. The ERC facilitates ethical research through efficient and effective review and monitoring processes, to promote ethical standards of human research and to review research in accordance with the Guidelines of the Forum of Ethics Review Committees in Sri Lanka (FERCSL Guidelines) and relevant national and international guidelines.

ERC has been a recognized ethics review committee by the Ministry of Health, Sri Lanka, since 2013. In May 2017, it was accredited by the Subcommittee on Clinical Trials (SCOCT) of the National Medicines Regulatory Authority (NMRA), Sri Lanka as the seventh ERC in Sri Lanka which can review and approve clinical trials. Further, ERC received SIDCER-FERCAP recognition in 2017. ERC is an institutional member of Forum of Ethics Review Committees in Sri Lanka (FERCSL). And, it is registered at U.S. Department of Health and Human Services as an institutional review board. Information related to the application procedure and ethics review evaluation process is available in ERC website (<http://www.rjt.ac.lk/med/index.php/ethic-review-committee>).

<b>Chairperson</b>	Dr. PHG Janaka Pushpakumara (MBBS, PgD(Psych), MPhil)
<b>Vice-chairperson</b>	Prof. TV Sundarabarathy (BSc Hons, MSc, PhD)
<b>Co-secretaries</b>	Dr. SMA Jayawardana (MBBS, MSc) Dr. YPJN Warnasekera (MBBS, MPH, FRSPH)
<b>Staff</b>	Mr. LADHR Wijayathunga (BMS in HRM, MHRM, AHRP)
<b>Contact Info.</b>	Phone: +94 252053633 Email: <a href="mailto:erc@med.rjt.ac.lk">erc@med.rjt.ac.lk</a> Fax: +94 252053633

## 2.9 Academic Departments

### 2.9.1 Department of Anatomy

(Phone: +9425 2234465)



The Department of Anatomy was officially founded in September 2006 and is one of the major departments of the faculty playing a pivotal role in preparing students for higher medical education. Since its early start with 165 students, the department has expanded to a nationally competitive and widely respected, and recognized institution. Presently, the department handles more than 420 students per annum. The basic objectives are the acquisition of comprehensive knowledge in anatomy and skills that would be reflected eventually in the clinical domain. Teaching anatomy has also been modified during the past few decades. There has been more concentration on encouraging students' independent learning and on the introduction of a more applied aspect to the basic anatomical facts. The Department of Anatomy features,

#### *Dissection laboratories*

Dissection of the human body is a significant means to learn the subject of Anatomy and the department provides dissection facilities to students under the supervision of demonstrators. There are two well-equipped gross anatomy dissection laboratories with an infrastructure which can accommodate 180 students at a time.

#### *Histology laboratory*

The laboratory is equipped with 70 modern binocular microscopes with slide preparation facilities that help students understand the microscopic structure of human organs and the organization of tissues. A separate microscope is provided to each student for their practical assignments. The department has a vast range of histology slides including high-tech slides from the laboratory of North Carolina. (approx. 1500 slides)

#### *Cadaver preservation laboratory*

The cadaver preservation laboratory is one of the featuring sections in the department as it has state-of-the-art cadaver coolers and preservation tanks.

#### *Osteology museum*

The museum of osteology houses a large number of human bones and skeletal models to facilitate the process of students' learning.



### *Radiology museum*

A range of X-Rays, CT, and MRI films with visual aids are provided in the museum to illustrate the radiological anatomy of the human body.

### *Gross anatomy museum*

The dissected human body parts, models of the human body, and developmental details of prenatal life are exhibited. Students find these museum specimens helpful in consolidating what they learned in the dissection hall. The museum is not open to the public and the use of cameras or other image recording devices are strictly prohibited. These rules exist to provide a healthy learning environment and to show respect for the diseased.

Further, the department provides the following services:

- Clinical genetics services to patients referred from TH Anuradhapura, GH-Polonnaruwa, GH-Vavuniya, etc.
- Birth defects prevention programme in the Anuradhapura district.
- Minor Trauma Care Unit treats a wide variety of problems including cuts and grazes, sprains and strains, bites and stings, etc.
- The department assists with respect the public in their body donations.
- Anatomical specimens are provided for various academic programs rendered by the faculty.
- The preservation and mounting of human specimens required for the faculty are done by the department.

## Staff

### **Head**

Dr. SMA Jayawardana (MBBS, MSc)

Senior Lecturer Grade II

### **Academic staff**

Dr. CS Paththinige (MBBS, MSc, PG cert in Medical Education)

Senior Lecturer Grade II

Dr. HBD Jeewantha (MBBS, MSc, PhD)

Senior Lecturer Grade II

Dr. (Mrs.) KIS Koralegedara (MBBS)

Lecturer (Probationary)

### **Visiting Academic Staff**

Dr. Wimal Abeysekara (MBBS, MS)

Visiting Senior Lecturer & Consultant Surgeon

Dr. (Mrs.) Lilangani De Silva (MBBS MD)

Visiting Senior Lecturer & Consultant Radiologist

Prof. Sanjaya Adikari (MBBS, PhD)

Visiting Professor in Anatomy

### **Technical Officers**

Mrs. WMGC Weerasundara

Mrs. KN Liyanage

### **Management Assistant**

Mr. RMDT Ranasinghe

### **Support staff**

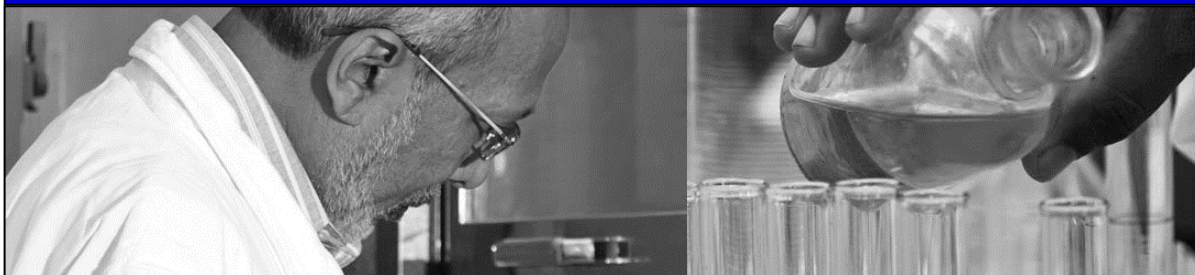
Mr. SMRP Bandara

Mrs. WAN Siriwardhana

Mr. PBSN Pushpakumara

Mr. DPL Thilakarathne

Mr. EM Janake



Biochemistry ‘the chemistry of life’ explores the chemical processes within and related to living organisms bringing biology and chemistry together. Sound knowledge on the principles of biochemical mechanisms involved in maintaining the integrity and homeostasis of living organisms provides the foundation to explore the basis of disease, diagnosis, and management. Department of Biochemistry was established as a preclinical department parallel to the establishment of the Faculty of Medicine on 11th of September 2006. From its inception, the Department of Biochemistry is highly committed to teaching-learning activities of the medical undergraduate programme, postgraduate teaching and supervision, and medical research. The core of our undergraduate programme includes cellular biochemistry, human genetics, human nutrition, and clinical and applied biochemistry, setting up a prime platform towards forming a qualified medical doctor. We conduct lectures, laboratory-based practical classes, small group discussions, problem-based learning, and seminars, using both online platforms and in-person.

Department of Biochemistry provides facilities for postgraduate research degrees and conducts special biochemical investigations requested by the Teaching Hospital, Anuradhapura in addition to the basic biochemical investigations. The department carries out research activities particularly in the fields of analytical biochemistry, human nutrition, human immunology, and molecular diagnostics. It is equipped with a well-established student laboratory, postgraduate research laboratory, and cell culture laboratory to facilitate teaching and research activities to meet the evolving needs in the field. Research activities conducted by the department actively contributes to the advancement of the biomedical knowledge, particularly in the fields of analytical biochemistry, human nutrition, proteomics, immunity, and molecular diagnostics. The department is equipped with a well-established student laboratory, post graduate research laboratory and a cell culture laboratory to facilitate teaching and research activities to meet the evolving needs in the field.

## Staff

### Head

Dr. HTW Weerakoon (MBBS, PGDipAppStat, MPhil, PhD)

Senior Lecturer Grade I

### Academic staff

Dr. SPAS Senadheera (BSc Hons, PhD)

Senior Lecturer Grade I

Mr. WW Kumbukgolle (BSc Hons, MPhil)

Senior Lecturer Grade II

Mr. RMISK Senavirathna (BSc Hons, MSc, MPhil)

Senior Lecturer Grade II

Dr. PRSRJ Bandara (MBBS)

Lecturer (Probationary)

### Technical Officer

Mr. WMBRS Gunathilaka

### Management Assistant

Ms. LJ Somapala

### Support staff

Mr. ISK Aluthgedara

Mr. DL Jayarathne

Mr. JVJN Jayasekara



Physiology is one of the fundamental sciences taught to medical students during the first two years of their academic program along with Anatomy and Biochemistry. The aim is to gain a comprehensive knowledge of the normal structure and function of the human body. Department of Physiology is one of the departments established at the founding of the faculty itself in September 2006. The department includes a laboratory, well equipped with instruments to assess human physiological functions, in addition to general facilities. The teaching of Physiology is carried out via lectures, practical classes, tutorials, clinical case discussions, clinical demonstration, textbooks, and online materials. Self-learning by the students is strongly promoted. The teaching is carried out system-wise under General Physiology, Hematology, Cardiovascular system, Respiratory system, Gastrointestinal system, Renal Physiology, Endocrinology, Reproductive Physiology, and Neurophysiology. Further, the department provides the following services:

- Basic clinical assessment of the physiological functions - Clinical system examinations, Anthropometric measurements of the body, Tests of vision, Tests of hearing, Body temperature measurement, Blood pressure measurement, Peak flowmetry
- Advanced clinical assessment of the physiological functions - assessment of lung functions with Spirometry and impulse oscillometry, Hematological tests, Bleeding time, Blood grouping, Packed cell volume, ESR, and Electrocardiography (ECG)

### Staff

#### Head

Dr. AMMV Kumari (MBBS, PhD)

Senior Lecturer Grade II

#### Academic staff

Dr. SP Wickramage (MBBS, MPhil)

Senior Lecturer Grade I

Dr. HECS Kumara (MBBS)

Lecturer (Probationary)

Dr. RMSI Rajapakse (MBBS)

Lecturer (Probationary)

Dr. HMNC Herath (MBBS)

Lecturer (Probationary)

#### Technical Officer

Ms. HMKA Jayatissa

Ms. JN Muthunayaka

#### Support staff

Mr. WA Lasantha

Mr. WW Haththottuwegama

#### Management Assistant

Mr. SMAB Samarakoon Nandika



The Department of Microbiology established in July 2008 is responsible for teaching undergraduates in medical microbiology and conducting research related to infectious diseases. The department is housed on the ground floor and second floor of the para-clinical building. It comprises a well-equipped diagnostic laboratory, a research laboratory that meets national and international standards, and office rooms for academic and non-academic staff. The basic objectives are to provide an understanding of the biology of pathogenic microorganisms, the interaction between the organisms and their human hosts, available treatment and preventive measures. This knowledge will guide the students to provide proper diagnosis and advice on treatment and prevention to the general public, as future medical practitioners. The services provided by the Department of Microbiology are;

- Performing microbiological investigations on request from hospitals and health facilities in the North Central Province.
- Clinical advice on problems related to diagnosis and management of infection to hospitals in the North Central Province of Sri Lanka that lack access to clinical microbiology consultant service.
- Consultant service on Infection Control to Teaching Hospital, Anuradhapura and State Hospitals in the North Central Province when required.
- Providing resource personnel for conducting laboratory training workshops.
- Training of newly recruited technical officers in universities and in government institutes.

## Staff

### Head

Dr. JAAS Jayaweera  
(MBBS, MSc (Biostat.), MPhil, PgD, MD, FRSPH)

Senior Lecturer Grade II

### Academic staff

Mrs. SC Illapperuma (BSc, MSc, MPhil)  
Dr. MGRSS Gunathilake (MBBS, MPhil)  
Dr. JMDD Jayasundara (MBBS, PgD)

Senior Lecturer Grade II

Senior Lecturer Grade II

Lecturer (Probationary)

### Technical Officers

Mr. AHAK Priyadarshana

### Staff Assistant

Mr. SMES Galagoda

### Support staff

Mr. WGPM Thilakarathna



In an era of intense human mobilization and critical environmental changes taking place, leading to faster expansion of disease boundaries, tropical and parasitic diseases have become an important cause of human morbidity across the globe. Hence it is of vital importance to strengthen medical professionals with adequate capacity to take up these evolving challenges. As such, we focus on educational and research activities to ensure that these demands are met. The Department of Parasitology has its own departmental space with fully equipped diagnostic and research laboratories for students. In addition, the department maintains a multi-disciplinary laboratory for undergraduate teaching, and an animal house to facilitate laboratory animal research.

Animal House of the Faculty of Medicine and Allied Sciences was established in 2009, to cater to the growing needs of animal experimentations of the Academic Departments. At present, the animal house is equipped with an insectary, laboratory animal breeding section and experimentation and post-mortem rooms. The Animal House is being maintained to meet with the accepted animal husbandry guidelines, using a well-planned, low-cost caging system. Mice and rabbit breeding programs are currently in operation with mice inbred and outbred colonies being available for researchers at short notice. These colonies were initiated with parent animals brought from an established colony maintained at the Animal House, Medical Research Institute, Colombo. The animal house successfully runs toxicity assessment studies and polyclonal antibody production programs for the development of diagnostics. Animal House is being managed by the Department of Parasitology.

We, the Department of Parasitology, conduct both undergraduate and postgraduate teaching-learning activities, and research projects of regional, national and global significance. Currently, we are teaching and supervising medical undergraduates, masters, and doctoral postgraduate students. The Department is strongly committed to training medical undergraduates with knowledge, attitudes, and practice skills on tropical diseases with a particular emphasis on medical parasitology, tropical diseases and global health, toxinology, and entomology. In addition, the Department provides diagnostic services, related to tropical diseases, to the national healthcare system. Novel and innovative approaches towards the development of affordable diagnostics for tropical diseases have also become a key focus of the department.

The department provides, service functions to the Teaching Hospital Anuradhapura, to all hospitals in the North Central Province, and the private sector in the form of special investigations, identification specimens and histology slides, expert advice and assistance to National and Local parasite control programs. The department also conducts outreach educational programs for school children and teachers in the NCP while senior academics are regularly called upon to deliver talks and lectures in various parts of the island. The department is also associated with the Cutaneous Leishmaniasis Control Program of the NCP conducted by the Regional Director of Health Services Office of Anuradhapura.

## Staff

### Head

Prof. KGAD Weerakoon (MBBS, PGDipApStat, MPhil, PhD, FRSPH) Professor

### Academic staff

Prof. NKA Silva (MBBS, MPhil, PhD, FRSPH, FRCPEdin) Professor  
Dr. WGSS Waiddyanatha (MBBS) Lecturer (Probationary)

### Visiting Academic Staff

Prof. JS Edirisinghe (MBBS, MSc, PhD, MD) Visiting Professor  
Prof. DJ Weilgama (BVSc, MVSc, PhD) Visiting Professor

### Technical Officers

Mr. WMPK Gamage  
Mr. RDN Pathirana  
Mr. HANS Hettiarachchi

### Management Assistant

Ms. DMSM Dissanayake

### Support staff

Mr. TW Elpitiya

### Work Aid

Mr. DMRL Dissanayake

## 2.9.6 Department of Pharmacology

(Phone: +9425 2227034)



The Department of Pharmacology was founded in 2006. It was originally established with one visiting Professor (Prof. R.L. Jayakody) and two probationary lecturers. The department evolved rapidly to face timely important challenges in the area.

One of the main aims of the department is to develop an understanding of fundamental mechanisms in chemical physiology and pathology, in the action of drugs, and in toxicology. In addition, the rational prescription is one of the main objectives. Further, the department plays a vital role in research related to chronic kidney disease in rural agricultural communities. Moreover, the department provides drug information services.

### Staff

#### Head

Dr. TKPK Kaluarachchi (BDS, PhD)

Senior Lecturer Grade I

#### Academic staff

Dr. WASN Wedasinhga (MBBS)

Lecturer (Probationary)

#### Technical Officer

Ms. KDAIM Dissanayake

#### Support staff

Mr. RRP Bandara



## 2.9.7 Department of Pathology

(Phone: +9425 2223533)



The Department of Pathology is involved in undergraduate teaching, research and diagnostic work. The main teaching commitment of the department is for the 3<sup>rd</sup> and 4<sup>th</sup> year medical undergraduates. It is housed on the first floor and is well equipped with a haematological and histopathological laboratory. Diagnostic haematological and histopathological procedures are being conducted which helps the patients admitted to the professorial unit of the teaching hospital Anuradhapura as well as the undergraduate and the postgraduate students in their learning endeavours. The department aims to produce medical graduates who are able to link the cause and effects of disease and to apply this knowledge in providing optimal patient care. The department houses a museum of pathological specimens, which is extensively used by the students.

### Staff

#### Head

Dr. MSV Mendis (MBBS, D Path, MD Haematology)

Senior Lecturer Grade II  
Consultant Haematologist

#### Academic staff

Dr. RDK Medonsa (MBBS, D Path, MD Histopathology)

Lecturer

Dr. TD Ekanayake (MBBS)

Lecturer (Probationary)

#### Technical Officers

Mr. CS Senevirathna

Ms. DAGM Dolewaththa

#### Support staff

Mrs. TMNK Tennakoon

Mr. SNM Sirisena

## 2.9.8 Department of Community Medicine

(Phone: +9425 2226252)



The Department of Community Medicine is the premier center for public health teaching, training and research in the Rajarata area. The primary mission of the Department of Community Medicine is to develop a stimulating academic environment for undergraduate and postgraduate training in public health through a unique blend of traditional community medicine teaching and hands-on public health experience. The department is devoted to the promotion of public health through education, research and community service. It conducts internationally renowned cross-cutting interdisciplinary research into a wide range of public health issues including neglected tropical diseases, maternal and child health and public mental health. The department features numerous opportunities for community-based student learning, experience in real-life public health interventions and outreach programmes and partnerships that promote health and the quality of life in the rural population in Rajarata area. The department is also widely recognised for its technical expertise with department members specialising in a wide range of disciplines related to public health. The department not only conducts a comprehensive undergraduate teaching-training programme, but also, there are a large number of post-graduate trainees in a wide array of subjects supervised by the department members. The department members are also involved in technical consultancies for international and local agencies related to public health.

The department of Community Medicine is a pioneer of community services of FMAS and at present provides a wide range of services to its' field lab (public health field practice area) and to the Anuradhapura district. These services cover a wide spectrum and of them, the extended community services mainly focus on addressing health inequities and promoting rural health. These activities include and are not limited to services for mentally disabled children, health promotional activities and outreach clinics especially targeted at disadvantaged communities, maternal and infant care services especially related to averting child malnutrition and improving maternal morbidity surveillance, disaster response activities and mental health promotion activities. These services are partly integrated into the community-based teaching programme to ensure that students get hands-on experience in the public health approach.

The Maternal and Child Health Research Unit (MCHRU) of the Department of Community Medicine was established in 2012 and during the past decade has been a centre of excellence in maternal and child health and related research and training. The centre has not only carried out numerous capacity-building activities, provided career/higher-education opportunities for undergraduate and postgraduate trainees, researchers and service providers; but also, has initiated a number of social welfare and community-based activities, specifically focusing on disadvantaged groups of communities. Moreover, the impact of the high-quality evidence generated through collaborative

research of the MCHRU funded by highly competitive international/local research grants is evident through the crucial national-level policy changes, especially in maternal and child health service delivery.

#### *Public Health Research Laboratory*

Public Health Research Laboratory attached to the department consists of basic biochemistry, microbiology and haematology investigations facilities to provide public health services. In addition, PHRL has a molecular laboratory with PCR and qPCR facilities. With in-built external and internal quality control, PHRL is the leading public health laboratory in the province. The PHRL is accredited by International Leptospirosis Association through MAT proficiency testing.

#### *Undergraduate Research Symposium of Faculty of Medicine and Allied Sciences (URSFMAS)*

As a part of the MBBS curriculum and the SLQF guidelines, Faculty of Medicine and Allied Sciences undergraduates are engaged in an eight-credit research module extending from the 5th to 8th semester. Moving beyond the usual academic research report, the Department of Community Medicine (the coordinating department) organizes URSFMAS every year to showcase the research findings of students. All student groups get an opportunity to present their research work to a panel of outside experts and get evaluated.

## Staff

### Head

Dr. YPJN Warnasekara (MBBS, MPH, FRSPH) Senior Lecturer Grade II

### Academic staff

Prof. SB Agampodi (MBBS, MSc, MD, MPH, FRSPH) Dean, Chair Professor  
Board certified specialist in Com Med.

Dr. TC Agampodi (MBBS, MSc, MPH, PhD, FRSPH) Professor

Dr. WAND Wickramasinghe Senior Lecturer Grade II  
(MBBS, Dip(OH&S), MSc (App. Epid.), MSc, MD, FRSPH) Board Certified Specialist in Com. Med.

Dr. GS Amarasinghe (MBBS, MSc, MPH, FRSPH) Senior Lecturer Grade II

Dr. HMIU Jayasinghe (MBBS) Lecturer (Probationary)

Dr. DAU Hettiarachchi (MBBS) Lecturer (Probationary)

### Postdoctoral Fellow

Dr. M Weerasinghe (BSc (Sp.), MSc, PhD)

### Technical Officer

Mr. PMG Perera

### Support staff

Ms. LJ Weerakkody

Mr. KADS Marasinghe

### Management Assistant

Ms. IGM Ilukwaththa

## 2.9.9 Department of Forensic Medicine

(Phone: +9425 2235276)



The Department of Forensic Medicine operates as a department within the Faculty of Medicine and Allied Sciences, Rajarata University of Sri Lanka. Its main goal is to advance the discipline of forensic medicine and to increase the evidence basis for the field through research. The department of Forensic Medicine was established in 2008 in the Para-clinical Coordinator's office in the administrative building. The department moved to its own premises in 2010, located on the west side of the ground floor of the new Para-clinical building. Department is equipped with a Forensic-Pathology Museum, which is extensively used by students. The department functions in close association with the Teaching Hospital Anuradhapura. The goal of the department is to undertake part of the medico-legal work in the Anuradhapura district and to complement the services already carried out by the consultant JMOO.

### Staff

#### Head

Dr. AB. Seneviratne (MBBS, MD, DLM, DMJ, FCFPSL)

Senior Lecturer Grade I  
Consultant JMO

#### Management Assistant

Mr. SP Ihelagedera

#### Support staff

Mr. KAAR Kodithuwakku

Ms. SGNP Gamage

## 2.9.10 Department of Family Medicine

(Phone: +9425 2057315)



Family Medicine is a specialty in breadth that integrates the biological, clinical and behavioural sciences. The Department of Family Medicine was established in December 2016 to enrich the MBBS curriculum with the concepts of Family Medicine; comprehensive and continuing health care in both preventive and curative contexts for the individual, family and community. The Department is conducting high-impact cross-disciplinary research, in the fields of primary care, rural health, mental health and toxicology, in collaboration with world-leading international universities. Moreover, there are strong links to other Departments of Faculty of Medicine and Allied Sciences, the professorial Unit of Teaching Hospital Anuradhapura, other faculties of the Rajarata University of Sri Lanka and local research organizations. The department conducts field clinics to promote health among rural communities of the Anuradhapura district.

Undergraduate teaching program in Family Medicine was commenced as a separate discipline in February 2021. The Department is leading the process of establishing a clinical skills laboratory for undergraduate training at the faculty premises and establishing a primary care center attached to the faculty to improve the quality of undergraduate training and to expand the community service. The undergraduate curriculum of Family Medicine has been designed to address the current global and local requirements including modern advances in the field of primary care. The teaching-learning activities include lectures, tutorials, case-based learning, Moodle-based learning related to principles of Family Medicine, skills expected from a family physician, health care provided by the family physician, care for the special groups, and health promotion and disease prevention. The following objectives are expected to be achieved by the medical undergraduates by following the above activities:

- understand how illness affects individuals, their families and society at large
- describe the health care provided by the family physician
- acquire communication, documentation and clinical skills in primary care

## Staff

### Head

Dr. PHGJ Pushpakumara (MBBS, PgD(Psych), MPhil)

Senior Lecturer Grade II

### Academic staff

Dr. D Rathish (MBBS, MPhil, MPH, FRSPH)

Senior Lecturer Grade II

Dr. DMPLK Abeyarathna (MBBS)

Lecturer (Probationary)

### Support staff

Ms. NPK Liyanarachchi



Department of Medicine is responsible for undergraduate and postgraduate teaching in clinical medicine and offers medical services at the Professorial Medical Unit, THA. The teaching program includes bedside teaching in the wards, clinics and the acute admission unit of the hospital, where there is a wide range of clinical problems.

The department carries out research, public engagement and advocacy. The department offices and its clinical services (wards 61 and 62) are both situated at the newly constructed modern six-storied professorial clinical building at THA. Clinical services and the research lab, which provides several educational facilities for clinical students and researchers, are situated on the first floor and the department offices are situated on the second floor. In addition, the department is equipped with a modern skills lab that provides several skills-based educational facilities for students.

## Staff

### Head

Dr. RDNC Sarathchandra  
(MBBS, MD, MRCP UK, FRCP Edin)

Senior Lecturer Grade II  
Consultant Physician

### Academic staff

Prof. SH Siribaddana  
(MBBS, MD, FCCP, FRCP Edin, FRCP Lon)

Chair, Senior Professor  
Consultant Physician

Dr. SD Pilapitiya  
(MBBS, MD, PGCME, Diploma in Ayurveda)

Senior Lecturer Grade II  
Consultant Physician

Dr. MRP Weerawansa (MBBS, MD)

Senior Lecturer Grade II  
Consultant Physician

Dr. AMAHMS Senanayake  
(MBBS, MD, MRCP UK, FRCP Lon,  
MRCP geriatrics (UK), FRCP Edin)

Senior Lecturer Grade II  
Consultant Physician

### Technical Officer

Mr. LVK Senarathna

### Management Assistant

Ms. TGSC Ranathunga

### Support staff

Mr. SAS Sugathadasa



The Department of surgery was established on the 29<sup>th</sup> of April 2009 within the Saliyapura faculty premises. The fully-fledged department is now located in the Professorial Unit, Teaching Hospital Anuradhapura.

The Professorial unit provides teaching and training in Clinical Surgery for undergraduates and postgraduates trainees along with its clinical services to a large segment of the population in the North Central Province. The service component of the department includes general surgical casualties, surgical clinics, emergency and elective endoscopies and routine surgical operations. Student teaching activities include mainly the final year surgical rotation of eight weeks. Students are exposed to round-the-clock patient management including clinical history taking, management decision making, investigations and critical care and trauma. Ward rounds, clinics and ward classes provide a regular opportunity for student teaching with ample clinical material.

## Staff

### Head

Dr. S Srishankar  
(MBBS, MD, FRCS(Glas), MRCS(Eng),  
MRCSEd, FRSPH, FMAS (Ind))

Senior Lecturer Grade II  
Consultant Surgeon

### Academic staff

Dr. SPB Thalgaspitiya  
(MBBS, MS, Diploma in laparoscopic surgery (IRCAD France)  
FMAS (India))

Senior Lecturer Grade II  
Consultant Surgeon

Dr. WSMKJ Senanayaka  
(MBBS, MD, MRCS Edin, FMAS (Ind))

Lecturer  
Consultant Surgeon (Acting)

Dr. AB Jayathilake  
(MBBS, MD, MRCS Glasgow, FMAS (Ind))

Lecturer  
Consultant Surgeon (Acting)

### Technical Officer

Ms. DMMDK Senavirathna

### Support staff

Mr. TG Niuton





Department of Paediatrics is located on the second floor of the Professorial Unit, Teaching Hospital Anuradhapura. The aim of the department is to train professionals, conduct research and provide services necessary for the management of diseases of infants, children and adolescents to optimize their growth and development and to allow them to achieve full potential as adults. The department aims to help trainees to achieve the knowledge, skills and attitudes needed to provide healthcare services to children of all ages in any part of the country.

Department of Paediatrics is young being established in the year 2009. It is continuing to grow up towards a fully-fledged department as its physical and human resources are being continuously improving. The department is primarily involved in training medical students of Rajarata University. We guild to help trainees to achieve knowledge, skills and attitudes needed to provide healthcare services to children of all ages in any part of the island and country. The department is also providing high-quality healthcare services to the children and young people of the North Central Province through the Professorial paediatric ward (ward 63) and paediatric clinics.

## Staff

### Head

Dr. WAJC Chandrakumara  
(MBBS, DCH, MD, MRCPH, FRSPH)

Senior Lecturer Grade II, Consultant Pediatrician

### Academic Staff

Dr. KMSS Rathnasiri (MBBS, MD, MRCPCH)  
Dr. GHI Dharshika (MBBS, DCH, MD)  
Dr. GGGT Amarakoon (MBBS, DCH, MD)

Senior Lecturer Grade II, Consultant Pediatrician  
Lecturer, Consultant Paediatrician (Acting)  
Lecturer, Consultant Paediatrician (Acting)

### Visiting Academic Staff

Prof SP Lamabadusuriya  
(MBBS, PhD, DSc, FRCP Edin, FRCP Lon,  
FRCP Glasg, FRCPCH, FCCP, FSLCP, FSLGP, DCH)

Visiting Professor

### Technical Officer

Mr. AB Herath

### Management Assistant

Ms. HD Dharmasinghe

### Support staff

Ms. RMPC Subasinghe

## 2.9.14 Department of Gynaecology and Obstetrics

(Phone: +9425 2227707)



The Department of Obstetrics and Gynaecology is located on the third floor of the professorial unit, Teaching hospital, Anuradhapura. The unit consists of three wards (64, 65 and 68) with 42-bed capacity namely antenatal, postnatal and gynaecology ward. All three wards include en suite high dependency units (HDU) to optimize the care for critically ill patients. In addition to wards, the department of obstetrics and gynaecology provides its services through a well-equipped gynaecology theatre and a modern delivery suite.

As the primary objective, the department provides an intellectually stimulating and friendly environment for students to learn Obstetrics and Gynaecology. The department conducts an undergraduate teaching programme through lectures and clinical appointments while demonstrating all relevant procedures in obstetrics and gynaecology.

It also takes part in postgraduate training and research in many aspects of Obstetrics and Gynaecology. Furthermore, the department provides clinical services through the Professorial Obstetrics and Gynaecology units of THA to the general public. Clinical services include maternity care inwards and clinics and also care of gynaecological patients through clinics and as in ward patients. This unit provides minimal invasive gynaecological surgeries through the 'RAGEC' gynaecological endoscopy center, which is extremely similar to the finest surgeries conducted throughout the world. As a fact, this is an excellent regional training center for all medical staff and nurses in the North Central province.

### Staff

#### Head

Dr. DMA Kumara (MBBS, MD, MRCOG)

Senior Lecturer Grade II

Consultant Obstetrician and Gynaecologist

#### Academic staff

Dr. NP Hettigama (MBBS, MD)

Senior Lecturer Grade I

Consultant Obstetrician and Gynaecologist

#### Technical Officer

Mr. WLG Upul

#### Management Assistant

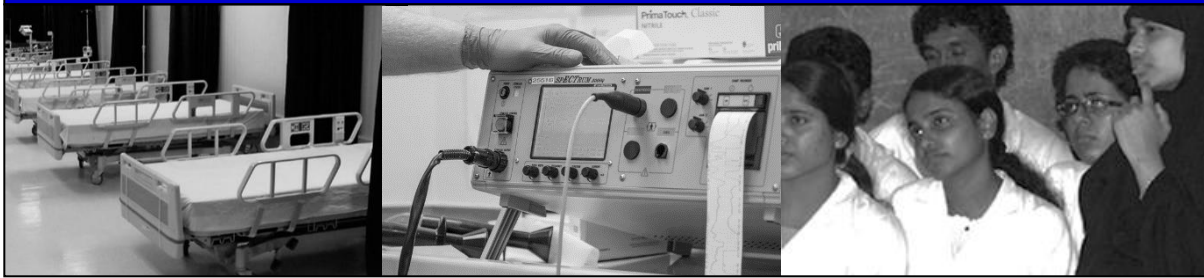
Ms. BASDP Jayathilaka

#### Support staff

Mr. A.S. Gamage

## 2.9.15 Department of Psychiatry

(Phone: +9425 2227704)



The Department of Psychiatry was established in 2008. Undergraduate teaching was commenced for third- and fourth-year students in the following year. In 2012, the department was moved to the new six-storied Professorial building from where it was initially established. In January 2017, the Professorial Psychiatry ward, which is a 34-bedded inpatient facility at the THA, was opened to promote psychiatry professorial student appointments in the final year.

The department is actively involved in providing a dedicated clinical service as well as teaching and research in psychiatry. The department conducts teaching programs for undergraduate medical students and postgraduate trainees in Psychiatry. The acute care unit provides inpatient services and a range of outpatient services.

### Staff

#### Head

Dr. LL Amila Isuru (MBBS, MD, MRCPsych)

Senior Lecturer Grade II  
Consultant Psychiatrist

#### Academic staff

Dr. SMBH Abeyratne (MBBS, MD)

Lecturer  
Consultant Psychiatrist (Acting)

#### Visiting Academic Staff

Prof. Diyanath Samarasinghe  
(MBBS, MD, FRCPsych, DSc)

Visiting Professor of Psychiatry

#### Management Assistant

Ms. WMDP Weerasuriya

#### Support staff

Mr. JM Pushpakumara

## 2.9.16 Medical Education Unit (MEU)

(Phone: +9425 2050654)



The Medical Education Unit (MEU) was formally established in the Faculty of Medicine and Allied Sciences, Rajarata University of Sri Lanka, with a view of providing sustainable human resource development academic staff of the faculty and conducting research in relation to the training of health professionals in the educational process. The MEU has been fully operational for the last 8 years. The academic staff qualified in curriculum planning, designing and evaluation, introducing, evaluating and assuring the quality of teaching/ learning and assessment methods. With this background, Medical Education Unit has been at the forefront of ensuring the effective and efficient functioning of the MBBS programme offered by the faculty. It supports the academic staff and the extended faculty to enhance their teaching scholarship through various staff development programmes and research activities. The MEU is currently involved in:

- Training medical teachers in the principles and methods of Medical Education through regular seminars, workshops, etc.

MEU runs short workshops on various important aspects of Medical Education, for academic staff in the faculty as well as for the extended faculty. The most important of these is the 'Basics of Medical Education' workshop for probationary lecturers. This workshop has been recognised as a part of the UGC-accredited staff development programme. In addition, the MEU runs short staff development workshops on specific topics based on the needs of the academic staff and the curriculum.

- Providing continuing guidance to the faculty regarding curriculum, teaching-learning methods, evaluation and quality assurance.

From its inception, the MEU provides guidance to the faculty in terms of revising, monitoring and evaluating course curriculum. The MEU collects feedback from both students and teachers, and examines current trends in medical education to make an informed decision on the curriculum. MEU Providing expertise during designing of new courses or review and revision of existing modules/courses and instructional design process. MEU Ensuring smooth implementation of the revised curriculum, creating awareness on problem-based learning process among involved staff members, assisting the faculty to train the facilitators as well as guide clinical staff members on designing problems for PBL sessions. Further, MEU Contributes to the 'peer assessment of teachers' program in the faculty. MEU Coordinating the internal quality assurance process in the Faculty of Medicine and Allied Sciences.

- **Teaching undergraduate students**  
The academic staff in the MEU contributes to the teaching of research and personal and professional development. staff also participate as facilitators in student-centred learning activities like problem-based learning, small-group discussions, portfolio-based assessments. The MEU coordinates and maintains the computer-based learning environment and the staff involves in developing e-learning material for student learning.
- **MEU promote and conduct educational research**  
Promoting educational research leads to informed decision-making in health professions training.
- **Establishing collaborations with outside universities for sharing expertise on innovations in medical education and conducting staff development activities.**
- **Improving attitudes and enhancing professionalism among students**  
Personal and professional development is one of the main strands of learning in the MBBS degree programme. The strand intends to improve the attitudes, ethics and professionalism of medical students. The departments of family medicine, community medicine and psychiatry make their contribution at relevant points to cover certain areas related to their respective disciplines. However, fostering professionalism and personal development among students has not been taking place in a coordinated manner. The MEU takes the primary responsibility for coordinating the delivery of professional and personal development aspects of the strand.
- **Continuing Professional Development (CPD) in Higher education**  
This is a requirement in the future and MEU with its links with national and international training centres is well suited to organize workshops and certificate and Diploma level programs to enhance scholarship in education. The MEU can facilitate innovations in teaching and assessments. The MEU along with its staff associates would be able to conduct training programs on student-centred learning and assessments for academic staff of faculties of Health Sciences. The MEUE has the potential to provide a platform form for interested staff from different disciplines to discuss issues related to teaching-learning and student assessment and come up with innovative solutions.

## Staff

### Head

Dr. YGSW Jayarathne (MBBS, PG Dip MEd, MD)

Senior Lecturer Grade II  
Board certified specialist in  
Medical Education

### Management Assistant

Ms. N.L. Rathnayaka

## 2.9.17 Radiology and Anaesthesiology Unit

(Phone: +9425 2226276)



The Radiology and Anaesthesiology Unit was established in 2017. The unit provides teaching and training in Anaesthesiology for undergraduates and postgraduates trainees along with its clinical services to THA. Also, the unit conducts workshops on Cardio-Pulmonary Resuscitation (CPR) for final-year undergraduates at the skills laboratory located in the professorial unit, THA. The aim of the workshop is to provide the essential knowledge to manage a critically ill patient. The students are expected to sit for an MCQ examination before and after the workshop. A certificate of completion is awarded to the students who pass the post-workshop examination.

The Anaesthesiology Unit provides services at THA for patients requiring peri-operative medical care in the following areas:

- General anaesthesia
- Obstetric and gynaecological anaesthesia
- Paediatric anaesthesia
- Trauma and neuro anaesthesia
- Regional anaesthesia
- Orthopaedic surgery
- Urologic surgery
- Ear, Nose, Throat (ENT) surgery
- Oral and maxillofacial (OMF) Surgery
- Eye surgery
- Gastrointestinal surgery

Also, the unit provides high-quality critical care for intensive care and high dependency units of THA. Further, the unit conducts twice-weekly clinics for perioperative medical care and pain management. Medical doctors, medical students, and other medical support staff of THA receive training from the unit in relation to the above-mentioned areas.

### Staff

#### Academic staff

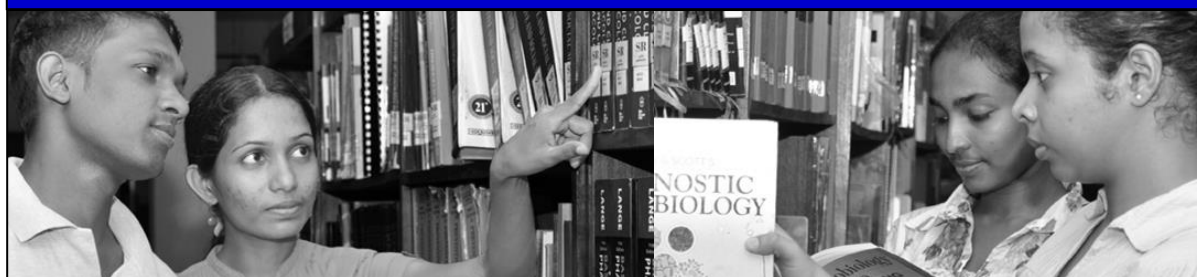
Dr. KADLP Kariyawasam (MBBS, MD)

Senior Lecturer Grade II  
Consultant Anaesthetist

## 2.10 Academic Supporting Centres

### 2.10.1 Library

(Phone: +9425 2226389 (Faculty), +9425 2237315 (Prof unit))



The Medical Library is the key medical information provider for health professionals and undergraduates in FMAS and THA. There are two library branches; one in the faculty premises at Saliyapura and the other one at Professorial Unit, THA. The professorial unit library extended its service to postgraduate studies as a PGIM resource center. The library is fully automated and integrated with KOHA Library management software and an Online Public Access Catalogue (OPAC) is available to access all the items of the library. Additional to the printed versions, online - database access and access to E-books are available. The reading room is a part of the library designated for quiet, individual study. The room is fully covered by the Wi-Fi network and most tables have nearby electrical outlets. Opening hours are similar to the library opening hours.

The medical library is well stocked with newer editions of more than 10,000 copies of textbooks and journals. In addition, the library has a good collection of electronic learning materials (CDs/DVDs), lecture notes, past examination papers (online and printed) medical newsletters, thesis and dissertation. The collection is annually updated. It has facilities to accommodate approximately 250 students. The medical faculty library is open to users from 0830h - 2215h from Monday-Friday and from 0830h - 1630h on weekends and public holidays. The professorial unit library is open to users from 1100h - 2215h from Monday-Friday and from 0830h - 1630h on weekends. Each student is entitled to borrow a reference book (01) for overnight and a non-reference/lending book (03) for a one-week loan, at a given time. Permanent reference books labeled "PR" (in red) may not be removed from the library. Fines are imposed on all books not returned by the due date. Library facilities should be accessed using a student's identity card.

#### Staff

##### Senior Assistant Librarian

Ms. WMPGKT Wanasinghe (BBA, MSSc)

##### Library Assistant

Mr. MKDA Amarasinghe  
Mr. GRDH Fernando  
Mr. W Indrajith  
Ms. KH Dammikanthi

##### Support Staff

Mr. ID Weerasinghe  
Mr. G Piyarathne  
Ms. MRA Wijerathna  
Ms. HMJB Dassanayake

##### Contact Info.

Phone: +9425 2226389 (Faculty br.), +9425 2237315 (Prof. Unit br.)  
Email: medrajaratalib@yahoo.com, library@med.rjt.ac.lk

## 2.10.2 Computer Laboratory

(Phone: +9425 2227176)



Information and Communication Technology (ICT) is now part of the fabric of all levels of education. The knowledge-seeking attitude of undergraduates is greatly facilitated by resources other than the traditional printed media. ICT-based learning and teaching are tremendously efficient in helping medical students to learn fast and well. The Computer Laboratory was ceremonially opened on the 13th November 2008.

Faculty of Medicine and Allied Sciences encourages the use of computing and network resources to enhance the learning and teaching environment of the faculty community. The Computer Laboratory is the main location that provides ICT resources for the students and the academic staff of the faculty. The faculty has a Learning Management System (LMS) which provides students with e-resources that complement classroom and clinical teaching. In addition, the computer laboratory provides ICT training for new entrants, maintains services of the Local Area Network, Internet and networking of the faculty and maintains the faculty website. The computer laboratory of the faculty comprises 45 computers. It operates from 08.30h to 18.30h on weekdays.

### Staff

#### Academic Coordinator

Dr. DAU Hettiarachchi (MBBS)

Lecturer (Probationary)

Department of Community Medicine

#### Instructor in Computer Technology

Mrs. AW Irugalbandara (BSc (IT), MIT)

#### Technical Officers

Mr. HAJP Herath

#### Support staff

Mr. PAJMCP Ranathunga



## 3. ACADEMIC PROGRAMME



### 3.1 Intended Learning Outcomes of the Medical Course

At the end of the MBBS course the graduate should possess knowledge and competencies regarding

1. Scientific knowledge for medical practice
2. Skills essential for medical practice
3. Ethics, attitudes and professionalism
4. Leadership, interpersonal relationships and teamwork
5. Research, evidence-based medicine and problem solving
6. Health promotion and social, cultural and environmental perspectives on health
7. Continuing professional development

### 3.2 Rules of the Medical Course

1. The number of attempts at the 2<sup>nd</sup> MBBS examination is limited to four and passing the 2<sup>nd</sup> MBBS examination is compulsory to precede the course.
2. The maximum period of study in the faculty is 10 years.
3. All clinical appointments should be completed before the commencement of Professorial appointments.
4. Students should pass the 3<sup>rd</sup> MBBS Part I and Part II examination, compulsory English examination, Research in Medicine module, and all three modules of the Personal and Professional Development stream to obtain admission for the final MBBS examination.

### 3.3 MBBS Academic programme

The medical programme is a fulltime course conducted over a period of five years (Figure 5; page 47).

#### 3.3.1 Foundation course for medical studies

Purpose of the student foundation program is to help new students adjust and feel comfortable in the new environment, inculcate in them the ethos and culture of the university, help them build bonds with other students and faculty members, and expose them to a sense of larger purpose and self-exploration.

This consists of a 8 week course. At the start of the foundation, the new comers learn about the institutional policies, processes, practices, culture and values, and their mentor groups are formed. Further, the time during the Induction Program is also used to rectify some critical gaps, for example, English, for those students who have deficiency in it and there is continuous English programme during the induction course. An English examination will be conducted at the end of the course and 25% marks from this will be awarded to the compulsory English examination. Variety of activities (physical activities, creative arts. Lectures from eminent people, literacy activities and visit to local area) conducted under the foundation program in which the student would be fully engaged throughout the day for the entire duration of the program.

### **3.3.2 English Language Teaching Program**

#### **Intensive/ Foundation English Program**

The Foundation English Program consists of 10 weeks and it has been allocated 200 hours. The Curriculum is particularly designed for enriching the four skills of English Language of the students. Furthermore, the lessons are basically studded with Medical English as well as General English focusing more on IELTS Examination.

A Placement Test will be held prior to conducting the lectures as a mode of accessing the proficiency levels in English Language of the students. In addition, students are categorized as mixed ability groups when conducting the lectures.

There will be an End Course Examination at the end of the program and the students are supposed to get through it.

#### **English Program for 1<sup>st</sup> Year and 2<sup>nd</sup> Year Students**

English Program for 1st Year and 2nd Year Students is introduced to reinforce them to amplify their Language Skills in English. The Compulsory General English Program will be extended until the end of the Second Year. 80% attendance is mandatory and there will be an English examination at the end of the Second Year.

#### **Remedial English Program**

This Program facilitates the students who are in low language proficiencies to improve their knowledge of English Language. It is basically focused on to develop the speaking competency of the students, which is essential when stepping up to the practical world.

The students who wish to augment their Language Skills in English are almost welcome to take part in the lectures. The Lectures will be conducted in after hours in order to cater to their needs.

### 3.3.3 Year 1 and 2

The modules and semester assessments during each of the semesters are as follows:

#### Structure of the year 1 and 2 academic programme

Semester	Modules and Topics	Assessment (Components of examinations)
Y1S1	ISM, Blood, CVS, RS, Nutrition, Gross Anatomy (Upper Limb, Thorax)	CA1 Anatomy (MCQ, SEQ, OSPE) CA1 Physiology (MCQ, SEQ) CA1 Biochemistry (MCQ, SEQ)
Y1S2	GIT, Urinary, Reproductive, Endocrine, Nutrition, Gross anatomy (Abdomen, Pelvis)	CA2 Anatomy (MCQ, SEQ, OSPE) CA2 Physiology (MCQ, SEQ) CA2 Biochemistry (MCQ, SEQ)
Y2S3	CNS and Special senses, Nutrition, Gross Anatomy (Head and Neck, Lower Limb), Revision	
Y2S4	Research in Medicine Module	

(CA: Continuous Assessment, CNS: Central Nervous System, GIT: Gastro-intestinal tract, ISM: Introduction to Study of Man, MCQ: Multiple Choice Questions, OSPE: Objective Structured Practical Examinations, RS: Respiratory System, S: Semester, SEQ: Structured Essay Questions, CVS: Cardiovascular System, Y: Year)

#### Assessments in Pre-clinical academic programme

Assessment	Time of assessment	Assessment structure	Content assessed
<b>Formative assessment 01 (FA1)</b>	End of 8 weeks of Y1S1	Anatomy MCQ	M1101, M1105
		Anatomy OSPE	
		Physiology MCQ	M1101, M1102
		Biochemistry MCQ	M1101, M1102
<b>Continuous assessment 01 (CA1)</b>	End of Y1S1	Anatomy MCQ	M1101, M1103, M1104, M1105, M1106
		Anatomy SEQ	
		Anatomy OSPE	
		Biochemistry MCQ	M1101, M1102, M1103, M1104
		Biochemistry SEQ	
		Physiology MCQ	M1101, M1102, M1103, M1104
Physiology SEQ			
<b>Formative assessment 02 (FA2)</b>	During the 8 <sup>th</sup> week of Y1S2	Anatomy Viva	M1207, M1208, M1212
		Physiology MCQ	M1207, M1208
		Biochemistry MCQ	M1207, M1208, M1211

Assessment	Time of assessment	Assessment structure	Content assessed
<b>Continuous assessment 02 (CA2)</b>	End of Y1S2	Anatomy MCQ	M1207, M1208, M1209, M1210, M1212, M1213
		Anatomy SEQ	
		Anatomy OSPE	
		Biochemistry MCQ	M1207, M1208, M1209, M1210, M1211
		Biochemistry SEQ	
		Physiology MCQ	M1207, M1208, M1209, M1210
		Physiology SEQ	
<b>2<sup>nd</sup> MBBS (Main) examination</b>	End of preclinical course (Y2S3)	Anatomy MCQ	ALL (except M1102, M1211)
		Anatomy SEQ	
		Anatomy OSPE	
		Biochemistry MCQ	ALL (Except M1105, M1106, M1212, M1213, M2315)
		Biochemistry SEQ	
		Biochemistry OSPE	
		Physiology MCQ	ALL (Except M1105, M1106, M1211, M1212, M1213, M2315)
		Physiology SEQ	
Physiology OSPE			
Physiology OSPE			

Successful completion of 2<sup>nd</sup> MBBS examination is a prerequisite for entering the 3<sup>rd</sup> year. A student is allowed a maximum of 4 attempts to pass the above subjects. If unsuccessful after 4 attempts, the studentship will be terminated.

#### **Award of Distinctions**

At the end of 2<sup>nd</sup> MBBS, students will be awarded distinctions and medals for Anatomy, Physiology and Biochemistry based on the marks obtained. Distinctions will be awarded to the students who obtain a mark of  $\geq 69.51\%$  at the first attempt and students who pass the examination at the first attempt.

*\* Academic and examination schedules are subject to restructuring from time to time and such will be informed before the start of the respective programme.*

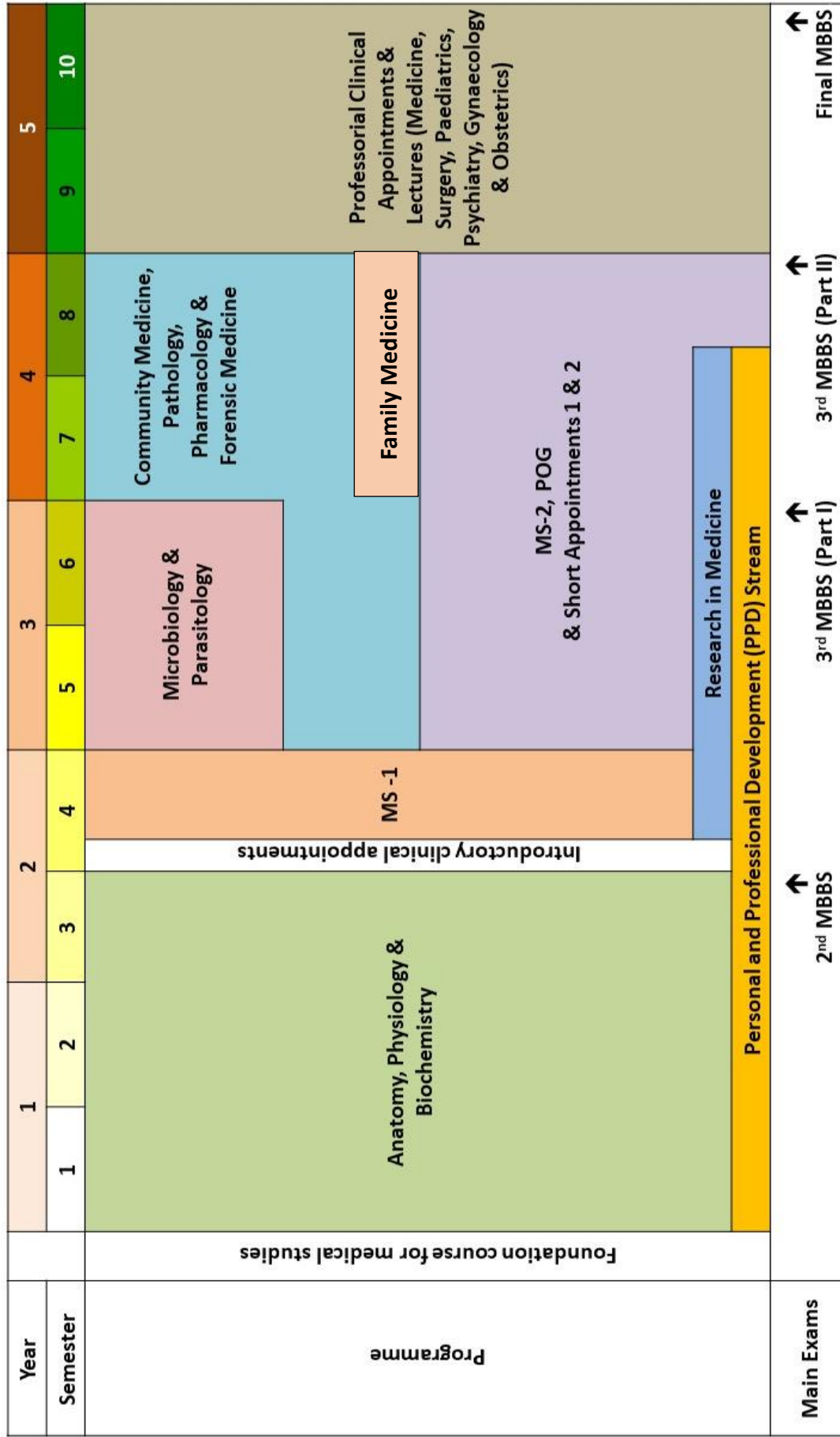


Figure 5: Structure of the MBBS Course

(MS-1: Medicine, Surgery -1 Appointment, MS-2: Medicine, Surgery -2 Appointment, POG: Paediatrics, Obstetrics and Gynaecology Appointment)

## **Foundation to clinical practice**

Students are expected to follow an introductory clinical program at the Teaching Hospital Anuradhapura, following 2<sup>nd</sup> MBBS examination.

## **Research in Medicine**

At the commencement of the 4<sup>th</sup> semester students will be grouped and research should be conducted by each group under the supervision of an academic staff member in the faculty. Four (4) semesters are allocated for Research in Medicine module. The research protocol will be assessed for its scientific merit. Ethical aspects of the research will be evaluated by the ERC committee and the report will be added to the assessments. Individual student assessment will be conducted by allocated research supervisors at the middle of the research process and at the completion of the research. Self-evaluation (reflective writing) and peer-evaluations on the individual contribution to the research process will be collected. All research groups are expected to do a research presentation at the end of the module at the Undergraduate Research Symposium, Faculty of Medicine and Allied Sciences. A review panel of experts will evaluate the student presentations. For details of the summative assessment, please refer curriculum document.

## **Personal and Professional Development (PPD) Stream**

PPD stream was included in the MBBS curriculum in 2016 to develop a graduate with values of highest ethical conduct and mutual respect. Further, this stream was introduced to achieve the requirements of Sri Lanka Quality Framework (SLQF) level 7 learning outcomes; communication, teamwork and leadership, creativity and problem solving, networking and social skills, adaptability and flexibility, attitude values and professionalism and vision for life (SLQF learning outcomes 3, 4, 5, 8, 9, 10 and 11). PPD stream is conducted from year 1 to 4 as three separate modules. Personal and professional is coordinated by the Department of Psychiatry and Medical education unit. For details of the assessments please refer curriculum document. The pass mark is 50% for each module. It is compulsory for the student to pass all three modules of the PPD stream to obtain admission for the final MBBS examination.

*\*Academic and examination schedules stated are subjected to re-structuring and such will be informed before the start of the respective programme.*

### 3.3.4 Year 3

All students who pass the 2<sup>nd</sup> MBBS examination will be allowed to proceed to the year 3 and clinical training. Students are expected to follow the clinical programme on all days other than designated holidays and the clinical programme does not follow the semester system.

#### Structure of year 3 academic programme

Semester	Subjects	Assessment (components of examinations)
Y3S5	Parasitology, Microbiology, Pharmacology, Pathology, Community Medicine, Research in Medicine Module	CA3: Parasitology (SEQ) CA3: Microbiology (MCQ, Practical Examination) CA3: Pharmacology (MCQ) CA3: Pathology (SEQ) Community Medicine (Introduction to Bio Statistics, Basic Epidemiology, Demography and Non-Communicable Disease Epidemiology) (MCQ, SEQ)
Y3S6	Parasitology, Microbiology, Pharmacology, Pathology, Community Medicine, Research in Medicine Module	CA4: Parasitology (SEQ) CA4: Microbiology (MCQ, OSPE) Community Medicine (Community Nutrition, Maternal and Child Health) (MCQ, SEQ)

(CA: Continuous Assessment, MCQ: Multiple Choice Questions, OSPE: Objective Structured Practical Examinations, S: Semester, SEQ: Structured Essay Questions, Y: Year)

During the year 3, semester 5 and semester 6 clinical training will be provided in the morning hours and coursework will be in the afternoon. 100% attendance is compulsory for all clinical appointments. At the end of year 3, 3<sup>rd</sup> MBBS Part-I examination will be held in the subjects Microbiology and Parasitology. The components of the 3<sup>rd</sup> MBBS Part-I examination are as follows:

#### Year 3, 3<sup>rd</sup> MBBS part I examination

Subject	Components of the 3 <sup>rd</sup> MBBS part 1 examination
Microbiology	MCQ, SEQ, OSPE, CA
Parasitology	MCQ, SEQ, OSPE, CA

(CA: Continuous Assessment, MCQ: Multiple Choice Questions, OSPE: Objective Structured Practical Examinations, SEQ: Structured Essay Questions)

A student who does not obtain the pass mark for Microbiology and/or Parasitology must sit for the repeat examination.

#### Award of Distinctions

At the end of 3<sup>rd</sup> MBBS Part-I examination, students will be awarded distinctions and medals for Microbiology and Parasitology based on marks obtained. Distinctions will be awarded to the students who obtain a mark of  $\geq 69.51$  % at the first attempt and students who pass the examination at the first attempt.

*\* Academic and examination schedules are subject to restructuring from time to time and such will be informed before the start of the respective programme.*

### 3.3.5 Year 4

During year 4, semester 7 and semester 8, short appointments and long clinical rotations at Teaching Hospital Anuradhapura will be continued in the morning hours and course work related to Pharmacology, Pathology, Community Medicine, Forensic Medicine and Family Medicine will be conducted in the afternoons. Hundred percent (100%) attendance is compulsory for all clinical appointments.

#### Structure of the Year 4 Academic Programme

Semester	Subjects	Assessment (Components of examinations)
Y4S7	Pharmacology, Pathology, Community Medicine, Forensic Medicine, Family Medicine, Research in Medicine Module	CA4 Pharmacology (MCQ) CA4 Pathology (SEQ) Community Medicine (Applied Epidemiology and Communicable Diseases, Demography and Non-Communicable Disease Epidemiology) (MCQ, SEQ) Research in Medicine Module
Y4S8	Pharmacology, Pathology, Community Medicine, Forensic Medicine, Family Medicine	

(CA: Continuous Assessment, MCQ: Multiple Choice Questions, S: Semester, SEQ: Structured Essay Questions, Y: Year)

At the end of year 4, 3<sup>rd</sup> MBBS Part-II examination is held including subjects of Pharmacology, Community Medicine, Pathology and Forensic Medicine. The components of the 3<sup>rd</sup> MBBS Part-II examination are as follows:

#### Year 4, 3<sup>rd</sup> MBBS part II examination

Subjects	Assessment (Components of examinations)
Pharmacology	MCQ, SEQ, OSPE, CA
Community Medicine	Public Health in Practice I (Family Study Programme) (Viva and Project report) Public Health Practice II (Clerkship Programme) (OSPHE) Public Health Practice III (MCQ, SEQ)
Pathology	MCQ, Essay, OSPE, CA
Forensic Medicine	SEQ, Essay, OSPE
Family Medicine	MCQ, SEQ, OSCE

(CA: Continuous Assessment, MCQ: Multiple Choice Questions, OSPE: Objective Structured Practical Examinations, OSPHE: Objective Structured Public Health Examinations, SEQ: Structured Essay Questions)



A student who does not obtain the pass mark for Pharmacology, Pathology, Forensic medicine and Family medicine must sit the repeat examination.

### **Overall Assessment of the Community Medicine course**

Final marks will be calculated using weighted average of all modular assessments. Weighted average will be calculated based on notional hours assigned to each module. For details of assessment please refer to curriculum documents.

### **Criteria to obtain a pass in Community Medicine course**

A student should,

1. Score a minimum weighted average of 50% for the course
2. Not have a score of less than 40% for a given module
3. Score a minimum of 50% for the Public Health in Practice I module (Family Study Programme)

Students scoring less than 40 for a given module should sit for the particular paper again (irrespective of his average). However, the maximum mark for subsequent attempts is limited to 50.

### **Award of Distinctions**

At the end of 3<sup>rd</sup> MBBS Part-II examination students will be awarded distinctions and medals for Community Medicine, Pathology, Pharmacology, Forensic medicine and Family medicine based on the marks obtained. Distinctions will be awarded to the students who obtain a mark of  $\geq 69.51$  % at the first attempt and students who pass the examination at the first attempt. Distinctions in Community Medicine will be awarded to the students who obtain score a minimum weighted average of  $\geq 69.51$  % with the minimum of 50% for each module at the first attempt and who pass the examination at the first attempt.

*\* Academic and examination schedules are subject to restructuring from time to time and such will be informed before the start of the respective programme.*

### 3.3.6 Year 5

Year 5, equivalent to 9<sup>th</sup> and 10<sup>th</sup> semesters, is spent entirely in clinical training in Professorial units at the TH Anuradhapura. Hundred percent (100%) attendance is compulsory for all clinical appointments. At the end of the year 5, Final MBBS Examination will be held. Components of the Final MBBS examination are as follows:

#### Components of Final MBBS examination

The MCQ paper is common to all faculties of Medicine and is held on the same day at the same time in all the faculties. The common MCQ examination is held twice a year. The pass mark with respect to each subject is described by the UGC standing committee document (section IV). Distinctions will be awarded to the students who obtain a mark of  $\geq 69.51$  % at the first attempt. The students will have to complete the final MBBS within ten academic years from the date of entering the university.

Subject	Components of assessment
Medicine	Common MCQ, SEQ, Long case, Short cases, End of appointment assessment
Surgery	Common MCQ, SEQ, Long case, Short cases, OSCE, Viva
Paediatrics	Common MCQ, SEQ, Long case, Short cases, In-course assessment
Gynaecology and Obstetrics	Common MCQ, SEQ, Gynaecology case, Obstetrics case, OSCE, Log book
Psychiatry	Common MCQ, SEQ, Long case, End of appointment assessment (MOCE, Viva)

(MCQ: Multiple Choice Questions, MOCE: Mini Observed Clinical Examination, OSPE: Objective Structured Practical Examinations, OSCE: Objective Structured Clinical Examination, SEQ: Structured Essay Questions)

*\* Academic and examination schedules are subject to restructuring from time to time and such will be informed before the start of the respective programme.*

### 3.4 Criteria for awarding classes for the MBBS Degree

- Average Mark  $\geq 59.51 < 64.51$  : Second Class Honours (Lower Division)
- Average Mark  $\geq 64.51 < 69.51$  : Second Class Honours (Upper Division)
- Average Mark  $\geq 69.51$  : First Class Honours

**Please refer MBBS Curriculum 2016 for more information, available at  
[http://www.rjt.ac.lk/med/images/documents/mbbs\\_curriculum\\_2016.pdf](http://www.rjt.ac.lk/med/images/documents/mbbs_curriculum_2016.pdf)  
and at the Medical Library**

**The List of Skills Expected from a Medically Qualified Graduate that should be  
acquired at the end of the MBBS course is available in the MBBS Curriculum.**

### 3.5 Criteria for awarding Gold Medals

#### 3.5.1 2<sup>nd</sup> MBBS Examination

Subject	Performance of Students	Criteria	Name of the Gold Medal
<b>Anatomy</b>	Best Performance in Anatomy	Minimum of second-class upper division in 2 <sup>nd</sup> MBBS examination & distinction in Anatomy, highest aggregate in Anatomy	Prof. Malkanthi Chandrasekera gold medal in Anatomy
<b>Physiology</b>	Best Performance in Physiology	Minimum of second-class upper division in 2 <sup>nd</sup> MBBS examination & distinction in Physiology, highest aggregate in Physiology	Prof. Malini Udupihille gold medal in Physiology
<b>Biochemistry</b>	Best Performance in Biochemistry	Minimum of second-class upper division in 2 <sup>nd</sup> MBBS examination & distinction in Biochemistry, highest aggregate in Biochemistry	Prof. PAJ Perera gold medal in Biochemistry
<b>2<sup>nd</sup> MBBS Overall</b>	Best overall Performance at the 2 <sup>nd</sup> MBBS Examination	Minimum of second-class upper division in 2 <sup>nd</sup> MBBS examination, highest aggregate in 2 <sup>nd</sup> MBBS examination	Prof. PAJ Perera gold medal for overall best Performance in the 2 <sup>nd</sup> MBBS Examination

### 3.5.2 3<sup>rd</sup> MBBS Examination

Subject	Performance of Students	Criteria	Name of the Gold Medal
<b>Parasitology</b>	Best Performance in Parasitology	Minimum of second-class upper division in 3 <sup>rd</sup> MBBS examination & distinction in Parasitology, highest aggregate in Parasitology	Prof. Sarath Edirisinghe gold medal in Parasitology
<b>Microbiology</b>	Best Performance in Microbiology	Minimum of second-class upper division in 3 <sup>rd</sup> MBBS examination & distinction in Microbiology, highest aggregate in Microbiology	Prof. Danister Weilgama gold medal in Microbiology
<b>Pharmacology</b>	Best Performance in Pharmacology	Minimum of second-class upper division in 3 <sup>rd</sup> MBBS examination & distinction in Pharmacology, highest aggregate in Pharmacology	Prof. Anura Weerasinghe gold medal in Pharmacology
<b>Pathology</b>	Best Performance in Pathology	Minimum of second-class upper division in 3 <sup>rd</sup> MBBS examination & distinction in Pathology, highest aggregate in Pathology	Dr. Vasana Mendis gold medal in Pathology
<b>Forensic Medicine</b>	Best Performance in Forensic Medicine	Minimum of second-class upper division in 3 <sup>rd</sup> MBBS examination & distinction in Forensic Medicine, highest aggregate in Forensic Medicine	Dr. Dhananjaya Waidyaratne gold medal in Forensic Medicine
<b>Community Medicine</b>	Outstanding Performance in Community Medicine	Minimum of second-class lower division in 3 <sup>rd</sup> MBBS examination & distinction in Community Medicine, highest aggregate in field practice & research	Prof. Suneth Agampodi gold medal for outstanding performance in Community Medicine
	Highest aggregate in Community Medicine	Minimum of second-class upper division in 3 <sup>rd</sup> MBBS examination & distinction in Community Medicine, highest aggregate in Community Medicine	Department of Community Medicine gold medal for highest aggregate in Community Medicine
<b>3<sup>rd</sup> MBBS overall</b>	Best overall Performance in 3 <sup>rd</sup> MBBS Examination	Minimum of second-class upper division in 3 <sup>rd</sup> MBBS examination, highest aggregate in 3 <sup>rd</sup> MBBS Examination	Dr. A.B. Senavirathna gold medal for best overall Performance in 3 <sup>rd</sup> MBBS Examination

### 3.5.3 Final MBBS Examination

Subject	Performance of Students	Criteria	Name of the Gold Medal
<b>Medicine</b>	Best Performance in Medicine	Minimum of second-class upper division in final MBBS examination & distinction in Medicine, highest aggregate in Medicine	Prof. Sisira Siribaddana gold medal in Medicine
<b>Obstetrics &amp; Gynecology</b>	Best Performance in Obstetrics & Gynaecology	Minimum of second-class upper division in final MBBS examination & distinction in Obstetrics & Gynaecology, highest aggregate in Obstetrics & Gynecology	Dr. Nandana Hettigama gold medal in Obstetrics & Gynaecology
<b>Paediatrics</b>	Best Performance in Paediatrics	Minimum of second-class upper division in final MBBS examination & distinction in Paediatrics, highest aggregate in Paediatrics	Dr. Mohamed Rayes Musthafa gold medal in Paediatrics
<b>Surgery</b>	Best Performance in Surgery	Minimum of second-class upper division in final MBBS examination & distinction in Surgery, highest aggregate in Surgery	Prof. Arjuna Panchkori Ram Aluvihare gold medal in Surgery
<b>Psychiatry</b>	Best Performance in Psychiatry	Minimum of second-class upper division in final MBBS examination & distinction in Psychiatry, highest aggregate in Psychiatry	Prof. Diyanath Samarasinghe gold medal in Psychiatry
<b>Final MBBS overall</b>	Best overall Performance at the final MBBS examination	Minimum of second-class upper division in final MBBS examination, highest aggregate in final MBBS examination (four subjects or five subjects)	Dr. N.J. Dahanayake gold medal for overall best performance at the final MBBS examination

### 3.6 Criteria for awarding Dean's Award

Best students in each of the following categories shall be selected for the Dean's award:

1. Dean's Award for the 2<sup>nd</sup> MBBS (based on 2<sup>nd</sup> MBBS results and extracurricular activities with proven documents from the date of entrance to the FMAS, RUSL, to the end date of 2<sup>nd</sup> MBBS repeat examination of that particular batch)
2. Dean's Award for the 3<sup>rd</sup> MBBS (based on 3<sup>rd</sup> MBBS part I, II results and extracurricular activities with proven documents from the end date of 2<sup>nd</sup> MBBS repeat examination to the end date of 3<sup>rd</sup> MBBS part II repeat examination of that particular batch)
3. Dean's Award for the Final MBBS (based on Final MBBS results and extracurricular activities with proven documents from the end date of 3<sup>rd</sup> MBBS part 2 repeat examination to the end date of final MBBS repeat examination of that particular batch)

The marking scheme considers academic performance and performance in extracurricular activities, listed below, in scoring.

- Achievements and participation in sports
- Active involvement in student societies
- Active participation and achievements in cultural/ aesthetic events
- Active involvement in organizing committees (cultural/ social/ sports/ academic event/ symposia/ religious)
- Individual and group research work and publications
- Innovations/ Patents
- Engagement in social work

#### Procedure

- A notice on Dean's list will be displayed on students' notice boards after every 2<sup>nd</sup> MBBS repeat, 3<sup>rd</sup> MBBS part II repeat and final MBBS repeat examinations. Students who sat for the relevant examinations can apply for the award.
- Students who have applied for the award on or before the deadline will be considered for the award and late submissions will not be entertained.
- List of students who are eligible to be in the Dean's list for a particular examination will be tabled at the Faculty Board and a certificate of achievement will be awarded.
- A certificate of achievement and the Dean's Gold Medal will be awarded for the best student of each category (2<sup>nd</sup> MBBS, 3<sup>rd</sup> MBBS, Final MBBS) at an award ceremony which will be held at the consequent Faculty Board/ convocation.

## Application Procedure

- Students shall apply for the awards using the application form issued by the University. Application forms shall be available at Dean's office and can be downloaded from university web site
- Students shall submit certified copies of all the documentary evidence with the application
- Students shall submit their applications through their Mentors/Academic Advisers who shall certify the contents of the applications
- Students shall prepare and participate for an interview if the selection panel requests

## Eligibility Criteria

- Students obtaining 2<sup>nd</sup> Class Lower division or above in the first attempt of the examinations (2<sup>nd</sup> MBBS/ 3<sup>rd</sup> MBBS Part-II/ Final MBBS) held during the respective year will be eligible for an award
- Students can score marks under 6 criteria. The minimum mark for academic work will be 240. The minimum total mark of 420 should be scored to be eligible for the Dean's award
- Final decision regarding the nomination will be taken by the Dean's list committee
- Final decision regarding the Dean's list should be approved at the Faculty Board, Faculty of Medicine and Allied Sciences, RUSL
- Any student who has been punished by the University and/or warned (in writing) by the Vice Chancellor or Deputy Vice Chancellor or Dean as found guilty for any misconduct [i.e. violation of university rules and regulations, examination rules and regulations, damage to the image of the university/ faculty during his/her university career (up to the respective year)] shall not be eligible for an award

## 3.7 Common merit list

Common merit list of all graduates in the state universities are prepared, on performance at Final MBBS examination, by the UGC and sent to the Ministry of Health after the final MBBS exam for internship appointments. Raw MCQ marks and Z scores of clinical exams are taken into account when preparing the common merit list.

## 3.8 Internship

Successful completion of internship is compulsory to obtain Sri Lanka Medical Council registration and to practice Medicine in Sri Lanka. It is a part of training to become a medical doctor. Without internship and Sri Lanka Medical Council registration you are unable to practice Medicine in Sri Lanka.



## 4. RULES AND REGULATIONS PERTAINING TO EXAMINATIONS



### 4.1 General examination rules and regulations

- i. Candidates shall be in attendance outside the examination hall at least 15 minutes before the commencement of each paper but shall not enter the halls until they are requested to do so by the supervisor.
- ii. On admission to the hall a candidate shall occupy the seat allotted to him and shall not change it except on the specific instructions of the supervisor.
- iii. No candidate shall be admitted to the examination hall for any reason whatsoever after the expiry of half an hour from the commencement of the examination. Nor shall a candidate be allowed to leave the hall until half an hour has lapsed from the commencement of the examination or during the last 15 minutes of the paper.
- iv. A candidate shall have his student record book and the admission card with him in the examination hall on every occasion he presents himself for a paper. His candidature is liable to be cancelled if he does not produce the record book. If he fails to bring his record book on any occasion, he shall sign a declaration in respect of the paper for which he had not produced the record book in the form provided for it, and produce the record book on the next occasion when he appears for the examination. If it is the last paper or the only paper he is sitting, he shall produce the record book to the registrar on the following day. If a candidate loses his record book in the course of the examination, he shall obtain a duplicate record book/ identity card from the registrar, for production at the examination hall.
- v. No candidate shall have on his person or in his clothes, or on the admission card, time table or record book any notes signs or formulate etc. Books, notes, parcels, hand bags etc., which a candidate has brought with him, should be kept at a place indicated by the supervisor/ invigilator.
- vi. A candidate may be required by the supervisor to declare any item in his possession or person.
- vii. No candidate shall copy or attempt to copy from any book, paper, notes, or similar material or from the scripts of another candidate. Nor shall any candidate either help another candidate or obtain help from another candidate or any other person. Nor shall any candidate conduct himself so negligently that an opportunity is given to any other candidate to read anything

written by him or to watch any practical examination performed by him. Nor shall any candidate use any other unfair means, obtain, or render improper assistance at the examination.

- viii. No candidate shall submit a practical or field book, dissertation, or project study or answer script, which has been done wholly or partly by anyone other than the candidate himself.
- ix. Candidate shall bring their own pens, ink, mathematical instruments, erasers, pencils, or any other approved equipment or stationery, which they have been, instructed to bring.
- x. Examination stationery (i.e., Writing paper, graph paper, drawing paper, ledger paper, précis paper etc.) will be supplied as and when necessary. No sheet of paper or answer book supplied to a candidate may be torn crumpled, folded or otherwise mutilated. No paper other than those supplied to him by the supervisor/ invigilator shall be used by candidates. Log tables or any other material provided shall be used with care and left behind on the desk. All the material supplied, whether used or unused, shall be left behind on the desk and not to be removed from the examination halls.
- xi. Every candidate shall enter his index number on the answer book and on every continuation paper. He shall also enter all necessary particulars as indicted in the cover of the answer book. A candidate who inserts on his script and index number other than his own is liable to be considered as having attempted to cheat. A script that bears no index number or an index number, which cannot be identified, is liable to be rejected. No candidate shall write his name or any other identifying mark on the answer script.
- xii. All calculations and rough work shall be done only on paper supplied for the examination and shall be cancelled and attached to the answer script. Such work should not be done on admission cards, timetables, question papers, record books or on any other paper. Any candidate who disregards these instructions runs the risk of being considered as having written notes or outline of answers with the intention of copying.
- xiii. Any answer or part of an answer, which is not to be considered for the purpose of assessment, shall be neatly crossed out. If the same question has been attempted in more than one place the answer or answers that are not to be counted shall be neatly crossed out.
- xiv. Candidates are under the authority of the supervisor and shall assist him by carrying out his instructions and those of his invigilators, during the examination and immediately before and after it.
- xv. Every candidate shall conduct himself in the examination hall and its precincts so as not to cause disturbance or inconvenience to the supervisor or his staff or to other candidates. In entering and leaving the hall, he shall conduct himself as quietly as possible. A candidate is liable to be excluded from the examination hall for disorderly conduct.
- xvi. Candidates shall stop work promptly when ordered by the supervisor/ invigilator to do so.

- xvii. Absolute silence shall be maintained in the examination hall and its precincts. A candidate is not permitted for any reason whatsoever to communicate or to have any dealings with any person other than the supervisor/ invigilator.
- xviii. During the course of answering a paper, no candidate shall be permitted to leave the examination hall temporarily. In case of an emergency, the supervisor/ invigilator shall grant him permission to do so but the candidate will be under his surveillance.
- xix. No person shall impersonate a candidate at the examination, nor shall any candidate allow himself to be so impersonated by another person.
- xx. Serious note will be taken of any dishonest assistance given to a candidate, by any person.
- xxi. If circumstances arise which in the opinion of the supervisor render the cancellation or postponement of the examination necessary, he shall stop the examination, collect the scripts already written and then report the matter as soon as possible to the Vice chancellor/ Registrar.
- xxii. The supervisor/ invigilator is empowered to require any candidate to make a statement in writing on any matter, which may have arisen during the course of the examination, and such statement shall be signed by the candidate. No candidate shall refuse to make such a statement or to sign it.
- xxiii. No candidate shall contact any person other than the Vice Chancellor, Dean, Head of the Department or the Registrar regarding any matter concerning the examination.
- xxiv. Every candidate shall hand over the answer script personally to the supervisor/ invigilator or remain in his seat until it is collected. On no account shall a candidate hand over his answer script to the attendant, a minor employee or another candidate.
- xxv. Every candidate who registers for an examination shall be deemed to have sat the examination unless he/she withdraws from the examination within the specified period or submits a medical certificate prior to the commencement of the examination. The medical certificate shall be from the university medical officer. If this is not possible, the medical certificate should be obtained from a Government Medical Practitioner, and submitted to the university medical officer at the earliest possible time.
- xxvi. When a candidate is unable to present himself for any part/ section of an examination, he shall notify or cause to be notified this fact to the Registrar immediately. This should be confirmed in writing with supporting documents within 48 hours by registered post.
- xxvii. A student who withdraws or absents himself from the examination shall not be eligible for classes at the next examination unless the senate decides otherwise.
- xxviii. No student shall sit an examination, if he has exhausted the number of attempts that he is allowed to sit that particular examination, unless he has been granted special permission to do so by the Senate.

## 4.2 Examination irregularities/offences and punishments

The regulations (amended) concerning;

1. examination procedures, examination irregularities and punishments prepared by the committee appointed at the 162<sup>nd</sup> and 174<sup>th</sup> University Senate Meetings on 16<sup>th</sup> May 2013 and 20<sup>th</sup> June 2014 respectively.

These amended regulations will be referred to as “No. 1 of 1989 regulations concerning examination procedures, examination irregularities and punishments (amended) 2014” and is effective from 20<sup>th</sup> August 2015.

2. amended sections related to examination offences and punishments for candidates in the Examinations By-Law, FMAS, RUSL approved at the 140<sup>th</sup> faculty board meeting held on 17<sup>th</sup> December 2020 and 331<sup>st</sup> University Senate Meeting held on 21<sup>st</sup> January 2021.

### A. Examination Irregularities/offences

Examination irregularities/offences are classified briefly as follows.

- a. Possession of unauthorized documents or removal of examination stationary
- b. Possession of communication device such as cell phones pagers, smart-phones, smart-watches, tabs, etc. Whether they are used or not is immaterial, mere possession of them in the exam hall is an examination offence.
- c. Possession of any unauthorized electronic device. Whether they are used or not is immaterial, mere possession of them in the exam hall is an examination offence.
- d. Copying<sup>1</sup>
- e. Obtaining or attempting to obtain improper assistance or cheating<sup>2</sup> or attempting to cheat.
- f. Impersonation<sup>3</sup>
- g. Plagiarism<sup>4</sup>
- h. Attempting to get to know (a) question(s) or part of a question prior to the examination or during the examination through an any person by an unauthorized manner
- i. Attempting to reveal (a) question(s) or part of a question to another candidate prior to the examination or during the examination
- j. Disorderly conduct<sup>5</sup>
- k. Violation of any of the requirement or condition in examination procedure in section 12 of this document.
- l. Violation of any of the examination rules for the candidates in section 24.1 of this document.
- m. Aiding and abetting the commission of any of these offences listed above (a to l)

<sup>1</sup> *Communicating answers from or to another person*

<sup>2</sup> *Act of fraud, deceit, or dishonesty in an academic assignment including examination, or using or attempting to use or assisting others in using materials including communication devices that are prohibited or inappropriate in the context of an academic assignment*

*including examination to gain undue advantage, removal of stationary belonging to the University that are pertaining to examinations from the examination hall*

<sup>3</sup>*An act of pretending to be another person for the purpose of fraud or using another person to pretend to be self*

<sup>4</sup>*The practice of taking someone else's work or ideas and passing them off as one's own*

<sup>5</sup>*Unruly behavior, Not heeding to instructions of or influencing the Supervisor, Invigilator(s) and other staff, any act that may disrupt the conduct of the examination*

## B. Punishments for examination irregularities/offences

Irregularity/ Offence	Minimum Punishment	Maximum Punishment
<b>a, b, c, j, k, l</b>	Severe warning	Cancellation of the candidature from all the subjects of the particular main examination in which the offence was committed and three additional main examinations with or without suspension from the University for the same period.
<b>d, e</b>	Cancellation of the candidature from the all the components of the subject in which the offence was committed.	Cancellation of the candidature from all the subjects of the particular main examination in which the offence was committed and three additional main examinations with or without suspension from the University for the same period.
<b>f</b>	Cancellation of the candidature from all the subjects of the main examination in which the offence was committed and suspension from the University for six additional semesters, including examinations.	Expulsion as a student of the University and/ or appropriate legal action.
<b>g</b> (In a continuous assessment), <b>h, i</b>	Cancellation of the candidature from the particular component of the subject in which the offence was committed.	Cancellation of the candidature from all the components of the subject in which the offence was committed and two additional semesters.
<b>g</b> (In a main examination)	Cancellation of the candidature from all the components of the subject in which the offence was committed.	Expulsion as a student of the University and/or appropriate legal action
<b>m</b>	Severe warning	Expulsion as a student of the University and/or appropriate legal action

**University disciplinary committee shall be at liberty to increase the punishments prescribed here, considering the nature of the examination irregularity/offence committed. The punishments recommended by the University disciplinary committee will be executed on the approval of the University Senate.**

#### **4.3 Examination rules applicable to the MBBS degree course**

- (a) The number of attempts at the 2<sup>nd</sup> MBBS examination is limited to four while the maximum period of study in the faculty is 10 years. Passing the 2<sup>nd</sup> MBBS examination is compulsory to continue the course.
- (b) The examination immediately following the completion of the course shall be deemed to be the first available examination.
- I. To “sit an examination” denotes taking all components of the examination needed for completion of the examination, at one sitting of the same examination.
  - II. A student must sit the first available examination unless a valid excuse has been submitted to the faculty and accepted by the Senate.
  - III. This first available opportunity to sit an examination shall be considered the first attempt whether the student “sits the examination or not”.
- (c) In the event of an excuse submitted to the faculty for failure to sit an available examination being accepted by the senate, that examination shall not be considered an attempt.  
A valid excuse shall be,
- *an illness* – In case of illness while in residence, the student should consult the University/Faculty Medical Officer at the Student Health Center immediately. If a student falls sick at home or elsewhere during sessions or examination time, the student or his/her guardian should inform the Dean of the faculty within 5 days by telegram, telephone, fax or email followed by a letter indicating the nature of illness and the name of the attending doctor. The student should report to the University Medical Officer with a valid medical certificate as early as possible.
  - *a personal problem involving an immediate family member* – In case of a personal problem involving an immediate family member, the student should contact the Dean of faculty immediately by telegram, email or fax followed by a letter indicating the circumstances leading to his or her being absent from the examination. The Faculty Board will consider his/her excuse. Grounds for consideration would be,
    - i) Death of an immediate family member (immediate family members considered for this purpose are parents and siblings)

ii) Serious illness of an immediate family member requiring personal attention by the student, certified by a Medical Practitioner as per Senate rules governing medical certificates.

- Students participating in a university or national level event for which prior permission has been obtained from the Dean.
- Any other cause such as a natural disaster certified by a competent authority clearly precluding a student from sitting the examination.

(d) If the Senate has accepted the excuse for failure to sit the first available examination, the examination immediately following on the expiry of the period of postponement recommended by the faculty and accepted by the Senate shall be the student's first attempt. Any subsequent attempt must be taken at the very next available examination, subject to the provision in respect of a valid excuse as defined in above.

(e) In the absence of an accepted excuse, failure to sit the first available examination will be considered an unsuccessful attempt at the Examination.

(f) At any given examination, a student must take all subjects in which he needs to pass to complete the examination.

(g) Examination marks and honors

Honors for the whole examination

- Average Mark  $\geq 59.51 < 64.51$  : Second Class Honours (Lower Division)
- Average Mark  $\geq 64.51 < 69.51$  : Second Class Honours (Upper Division)
- Average Mark  $\geq 69.51$  : First Class Honours

Honors for a subject

- $\geq 69.51$  % : Distinction
- $\geq 50.00 < 69.51$ % : Pass
- $< 50.00$  % : Referred

Classes and distinctions are only awarded to candidates who pass the whole examination at the 1<sup>st</sup> attempt.

**Please refer Examination by-laws for more information, available at**  
**[http://www.rjt.ac.lk/med/images/examination\\_branch/exam\\_by\\_laws/EXAMINATION\\_BY\\_LAWS\\_15-11-2017.pdf](http://www.rjt.ac.lk/med/images/examination_branch/exam_by_laws/EXAMINATION_BY_LAWS_15-11-2017.pdf)**  
**and at the Medical Library**

## 5. DISCIPLINE AND CONDUCT



Students should maintain proper standards of conduct and behaviour within the faculty and hostels and also outside. A student guilty of misdemeanour is liable to be suspended for a varying period of time or be expelled from the University. A few matters relating to conduct and discipline are highlighted below.

*Medical students are warned that it is illegal to engage in any form of medical practice, such as working with a general practitioner even under supervision, before lawfully qualifying as a doctor. Doing so could result in severe disciplinary action by the faculty and prosecution by the police in a court-of-law. The Sri Lanka Medical Council could even withhold registration to practice as a medical practitioner in Sri Lanka.*

### 5.1 General rules and regulations

#### Student Identity Card

Students must obtain their identity cards on admission to this University from the student Registration Branch, housed in the Senate building at Mihintale. The student identity card must be carried by the student during all times when within faculty premises. If lost, it must be immediately reported to Dean's office with a police certificate to that effect. An additional fee will be charged for replacement of the identity card.

#### Student Registration

In accordance with the rules of the Rajarata University of Sri Lanka, students are required to register at the commencement of the academic programme, and at the beginning of each academic year thereafter. Registration will be coordinated by the Students Service Unit, FMAS.

#### Dress

Dress should be clean, neat and simple. Shorts, miniskirts (above knee level) and rubber slippers should not be worn within the faculty premises. The students are not allowed to cover the face when participating in any teaching /learning and examination related activities. Candidates shall dress in smart professional attire, and wear a white clinical coat at the clinical examinations and laboratory practical examinations. Casual wear (i.e. shorts, t-shirts and flip flop) are not permitted. Both the ears must be kept uncovered.



### **Dissatisfaction and Discontent**

Student disagreement, dissatisfaction and discontent had been dealt with through dialogue and not through strikes from the beginning of the faculty. We believe that strikes are not weapons to be used by medical students and doctors.

### **Alcohol and Smoking**

Consumption of alcohol and smoking on faculty premises and in hostels is strictly forbidden. Serious disciplinary actions shall be taken for such misbehaviours.

### **Tidiness and cleanliness of the faculty**

Please keep the faculty clean and tidy. Litter should be thrown into litterbins. Students are not permitted to paste posters on walls. They may be displayed on a frame. Toilets and student discussion areas should be kept clean.

### **Punctuality and Attendance**

Students must make every effort not to be late for classes. Eighty percent (80%) attendance is required at Practical Sessions, Small Group Discussions, Tutorials and Problem Based Learning sessions in order to sit for the next continuous assessment or final assessment. Hundred percent (100%) attendance is mandatory for the successful completion of clinical appointments **(N.B.: students who do not have sufficient percentage of attendance for at least one subject are not eligible for all the subjects of the particular examination)**.

A student should not be absent without leave. Students who require leave should apply in writing to the Dean in advance (Annexure 1). If absence is due to unforeseen circumstances, the leave application should be submitted as soon as possible, not later than the first day of the student's return to the class.

In case of illness extending for three days or more, a medical certificate issued by the Chief Medical Officer (CMO) of RUSL should be submitted to the Dean. If a medical certificate is issued by a doctor other than the CMO, it should be certified by the CMO.

The medical certificate submission form available at Examinations division should be used when submitting medical certificates for examinations related matters.

### **Fees and Payments**

Fees, where necessary, should be paid on due dates.

### **Meetings/Functions of student societies/bodies**

Student societies shall hold meetings/functions subject on the condition that prior permission has been obtained from the Dean.

Such requests should be forwarded through the Senior Treasurer of the society and should contain the following particulars:

- Time date and place of the meeting/function
- Names of speakers (where applicable) and
- Whether any person other than a student or a teacher of the Rajarata University has been invited to the meeting

## 5.2 Ragging

Ragging (*navakavadaya*) in any form is considered a grave offence. The faculty has declared that it has zero tolerance for ragging. The student if proved to have engaged in any form of ragging will have to face serious disciplinary actions such as suspension or expulsion. The offences listed in the Prohibition of Ragging and Other Forms of Violence in Educational Institutions Act No.20 of 1998 (Annexure 2) are:

- a) forcible occupation and damage to property of an educational institution
- b) ragging
- c) hostage taking
- d) wrongful restraint
- e) unlawful confinement

Any incident of ragging should be reported to the Dean, Deputy Proctor of FMAS, Student Counselors immediately. In addition, students are encouraged to use the online complaints and redress mechanism for ragging, that has been developed and centrally managed by the UGC with the aim of establishing a violence free environment in universities where students and staff can work with security and dignity (<http://www.ugc.ac.lk/rag/>).

**Ragging complaint portal / නවකවදයහා සම්බන්ධ පැමිණිලි ඉදිරිපත් කිරීමේ බිහිදොර /  
පතිදිවෘත මුறைප් පාட்டு වායියල්**

<http://www.ugc.ac.lk/rag/>



**Deputy Proctor - FMAS: Dr. MRP Weerawansa (Phone: +94 773750414)**

## 6. SERVICES



### Student Health Center

Faculty of Medicine and Allied Sciences

### 6.1 Student counselling services

Student counselors are available in the faculty to support students in their personal health and academic matters. The names and contact details of the current student counselors are as follows:

Name	Designation	Department	Contact No
Dr. LL Amila Isuru	Senior Student Counselor	Psychiatry	077-7424850
Dr. S Srishankar	Student Counselor (Male)	Surgery	076-7026539
Dr. CS Paththinige	Student Counselor (Male)	Anatomy	077-7192144
Dr. WGSS Waiddyanatha	Student Counselor (Female)	Parasitology	070-2405577
Dr. WASN Wedasingha	Student Counselor (Female)	Pharmacology	077-1847280

### 6.2 Health services

The Student Health Center is a faculty resource and medical service center for all medical students in the faculty. It offers universal walk-in medical services. The main goal of the Student Health Center is to maximize the students' academic performance by supporting them in maintaining the best possible physical and mental health in a confidential, safe and nurturing environment. The center is located at west corner (ground floor) of the paraclinical building. It operates from 12.00 noon to 1.00 p.m. on working days. For more details please visit: [www.rjt.ac.lk/med/component/k2/item/178-studenthealth-center](http://www.rjt.ac.lk/med/component/k2/item/178-studenthealth-center).

- Services:**
- Emergency care
  - Wound care
  - Referrals to specialists
  - Teleconsultation
  - Primary care
  - Maintenance of confidential student health records
  - Provision of advices on ergonomics
  - Counselling

**Doctor in Charge:**

Dr. PHG Janaka Pushpakumara

**Support staff:**

Ms. NPK Liyanage

In addition to this center, the university health center located in the main campus, at Mihintale, also provides health care facilities to all the university students via a daily out patient service.

## 6.3 Accommodation

All students who fulfill the eligibility criteria to receive hostel facilities will be provided with hostels for accommodation from first year onwards.

### Academic Wardens

- **Dr. YPJN Waranasekara**  
(Academic Warden-Male)  
Senior Lecturer Grade II  
Department of Community Medicine  
071-3181238
- **Dr. AMMV Kumari**  
(Academic Warden-Female)  
Senior Lecturer Grade II  
Department of Physiology  
071-3103809 / 077-5868648

### Sub wardens

- Mr. RIU Nirmal - Sub Warden (Male) - 071-1080467
- Mrs. DMJS Dissanayake - Sub Warden (Female) - 071-4458653

### Support staff

- Mrs. RM Dissanayaka

### Main Hostels:

- **Pandukabhaya Hostel**, Bulankulama, Disamawatha, Stage 2
- **Wijayabahu Hostel**, Faculty Premises, Saliyapura

### Other Hostels (Male)

- Amarasiri Hostel, Theppankulama, Saliyapura
- Dias Hostel, Paniyankadawala Rd, Saliyapura
- DUS Karunadasa, 3<sup>rd</sup> Lane, Galwala Junction, Saliyapura
- Gamunu Hostel, Saliyapura
- Gnanasiri Hostel, Saliyapura
- KMGP Karawita, 435, Old post 4, Pankulama, Jaffna Rd, Saliyapura
- L Liyanage, 92, Old Water Tank Rd, Theppankulama, Saliyapura
- Nandaneer hostel, 150/C, Gamsabha Mawataha, Puliyanikulama
- Ranaweera hostel, No 27/B, Gamsabha Mawataha, Puliyanikulama
- SMA Pushpakumara, "Sureka", GamSabha Mw, Puliyanikulama, Saliyapura

### Other Hostels (Female)

- Amarasena Hostel, Anuradhapura
- Ground Hostel, Faculty Premises, Saliyapura
- Kandakulama Hostel, Anuradhapura
- Subhasinghe Hostel, Saliyapura

## **6.4 Financial support and scholarships**

### **Mahapola scholarship**

The Mahapola Trust Fund of the Ministry of Trade and Shipping awards Mahapola Scholarships to selected students entering the university.

### **University bursary assistance scheme**

Bursary assistance is awarded to selected students not receiving the Mahapola scholarship.

### **Saubhagya students' scholarship scheme**

In addition to Mahapola and University Bursary assistance schemes, students can apply for the faculty Saubhagya students' scholarship scheme, which operates under the guidance of Dr. SP Wickramage (founder and coordinator of Saubhagya students' scholarship scheme). More details could be obtained from the Department of Physiology.

## **6.5 Library**

Library services were described in 2.10.1 under Academic Supporting Centers. Medical library is open to users from 0830h - 2215h from Monday-Friday and from 0830h - 1630h in weekends and public holidays. Professorial unit library is open to users from 1000h - 2215h from Monday-Friday and from 0830h - 1630h in Saturday.

## **6.6 Reading room**

The reading room is a part of the library designated for quiet, individual study. The room is fully covered by the Wi-Fi network and most tables have nearby electrical outlets. Opening hours similar to the library opening hours.

## **6.7 Internet Services and Computer Laboratory**

All the departments of the faculty and library is equipped with the 4Mbps internet connections and additional Wi-Fi facilities. Wi-Fi zones are operated in student canteen, common rooms and almost all open lobbies of the faculty. These facilities are to be used strictly for educational activities.

## **6.8 Faculty website**

The faculty website is intended to provide information, materials, and guidance for all academic work. Information on all the administrative and supportive services are available in this website. This website is regularly updated and students are expected to access the website to get the recent updates and important news. Faculty website can be accessed at [www.rjt.ac.lk/med/](http://www.rjt.ac.lk/med/).

## **6.9 Faculty Cell of the Department of English Language Teaching**

The Faculty Cell of the Department of English Language Teaching comes under the purview of Department of English Language Teaching, Mihintale. The predominant focus of the Department of English Language Teaching is to enhance the English Language Proficiency of the undergraduates, which permits them to shape their personality as skilful professionals along with the refined communication skills in English. In terms of the services provided by the Faculty Cell of the Department of English Language Teaching, students have access to an English Language Laboratory at the main campus, Mihintale where they are able to study under the guidance of qualified instructors.

## **6.10 Cafeteria facilities**

### **Canteens in the faculty and professorial unit**

The canteen in the faculty provides breakfast, lunch and dinner at concessionary rates in addition to snacks and beverages.

### **Milk bar**

The milk bar in the faculty premises is kept open on weekdays and provides snacks and beverages at a reasonable price.

## **6.11 Drinking water facilities**

There is water purified by reverse osmosis (RO) technique available at all the canteens and student hostels.

## **6.12 Sports facilities**

Sports facilities for badminton, netball, volleyball and cricket etc. are provided under the guidance of the Director of Physical Education. Students can engage in outdoor sports in the sports ground located within the faculty premises.

### 6.13 Cultural activities

An active cultural center operates in the main campus Mihintale, and the students are encouraged to make maximum use of this facility.

### 6.14 Banking facilities

Financial transaction facilities can be obtained via a Bank of Ceylon (BOC) ATM outlet located just outside the faculty premises.

### 6.15 Postal services

Postal services can be obtained via the sub post office located in the faculty premises.

### 6.16 Other facilities

Photocopy and printing facilities at a low cost are available in the photocopy center in canteen area of the faculty. The Professorial unit comprises facilities such as an air-conditioned auditorium, seminar halls and laboratories.

### 6.17 Students' union

Medical Faculty Students' Union is the main student body.

<b>President</b>	Mr. RMCM Bandara
<b>Secretary</b>	Mr. RSIA Ekanayaka
<b>Vice President</b>	Mr. MNM Nazmil
<b>Editor</b>	Mr. UGCDS Udunuwara
<b>Junior Treasurer</b>	Mr. RMRB Ranatunga
<b>Committee members:</b>	
Mr. MDHD Umayanga	Mr. GT Sandeepa
Mr. MDK Nayanajith	Mr. BMGKM Bandara
Mr. PKL Dharmarathna	Mr. JBAH Dayakantha
Mr. DLUC Senevirathne	Ms. GNU Perera
<b>Senior Treasurer</b>	Prof. NKA Silva (Dept. of Parasitology)

## **6.18 Faculty academic mentoring program**

There will be continuous mentoring program and special mentoring programme for all the undergraduate students and all the members of the academic staff will be appointed as the mentors for the above-mentioned program.

### **Goals of the programme**

1. Promote students' self-confidence and development of critical thinking / decision making skills.
2. Personalize and humanize the university experience, especially providing support at the stressful time of transition from school life.
3. Identify each student's learning style, helping them meet the intellectual challenges of the university and take advantage of its resources.
4. Foster maximum academic, personal, and professional growth.

## **6.19 Facilities for differently-abled students**

Faculty of Medicine and Allied Sciences, Rajarata University of Sri Lanka is committed to ensure opportunity and environment that enables and enhances the educational experience of differently-abled students on the same basis as other members of the University community, in an environment that values diversity, is free from harassment, unlawful discrimination and promotes justice, equality of opportunity.

FMAS is committed to creating an inclusive, safe and supportive environment for all students and staff regardless of disability (or other protected characteristic) to support a positive experience for all members of the faculty. FMAS encourages a climate of openness and positive disclosure for students and staff with disabilities, including mental health difficulties; nevertheless, it is acknowledged that students and staff may find it difficult to disclose disabilities including mental health difficulties. All disclosed disability information is kept confidentially and sensitive personal data is only shared with the person's consent (unless it is deemed that they or others are at risk of harm) with university services, such as student counselling, health-care team, security and administrative officers, who may be responsible for supporting that individual. Please contact any academic staff member, student counselors, your mentor or Dr. PHG Janaka Pushpakumara, Head/Senior Lecturer in Family Medicine (+94 773 565 144) for further assistance.



## 7. UNIVERSITY LIFE



**“University life is about far more than just getting a degree; it is about meeting and working with people, having fun and most of all, growing up to be a responsible citizen.”**

The academic programme for the undergraduates of FMAS take place within the faculty premises as well as the THA and field practice areas. In addition to timetabled teaching/learning activities, students are encouraged to pursue their interests in research, sports, religious activities and performing arts.



## 8. AFFILIATED HOSPITALS AND FIELD PRACTICE AREAS



### 8.1 Teaching Hospital – Anuradhapura (THA)

THA is the third largest hospital in Sri Lanka and is situated in Anuradhapura city, 8 km away from the faculty. It serves as the main referral center in the North Central Province. THA has capacity of nearly 2,200 beds. In 2021, it served 110,871 and 135,072 individuals on an out-patient and in-patient basis respectively. It played a major role in functioning as a trauma management hospital caring for war casualties in the last stage of the humanitarian war in Sri Lanka. THA is the principal clinical teaching facility of the faculty. Also, Methsiri Sevana Corona Tertiary Care Centre is under the purview of THA.

#### General Information

**Telephone:** +9425 2222261-3, +94252224810  
**Fax:** +94252225616

**Director:** Dr. DMS Samaraweera

#### The List of Consultants:

1	Dr. D.M.I.S	Alahakoon	Consultant Anesthetist
2	Dr. I.A.C.L.	Perera	Consultant Anesthetist
3	Dr. W.K	Anuradha	Consultant Anesthetist (Acting)
4	Dr. K.C.D	Senevirathna (Mrs)	Consultant Blood Transfusion Physician
5	Dr. A.A.P.A.	Wijayagunawardhana.	Consultant Cardiac Electro Physiologist
6	Dr. B	Palinda	Consultant Cardio Thoracic Surgeon
7	Dr. D.A.S.	Karunarathna	Consultant Cardiologist
8	Dr. W.A.A.	Prasanna.	Consultant Cardiologist
9	Dr. H.T.N.	Hewageegana	Consultant Chemical Pathologist
10	Dr. M.R.F	Shireen	Consultant Dermatologist
11	Dr. J.A.M.B.	Sumanasena	Consultant Dermatologist
12	Dr. W.K.M.G.	Amarwardena	Consultant Endocrinologist
13	Dr. H.G.P.L.G.M	Arachchige	Consultant ENT Surgeon
14	Dr. T	Kiriella	Consultant ENT Surgeon
15	Dr. M.B	Perera	Consultant ENT Surgeon (Acting)
16	Dr. K.M.B.M	Weerasinghe	Consultant Eye Surgeon
17	Dr. W	Wijayasiriwardhana	Consultant Eye Surgeon

18	Dr.	K.M.M.	Kulasekara	Consultant General Surgeon
19	Dr.	K	Saseekaran	Consultant General Surgeon
20	Dr.	R.G.I	Upanisad	Consultant GI Surgeon
21	Dr.	S	Widanapathirana	Consultant GU Surgeon
22	Dr.	S.M	Gunathilake	Consultant Hematologist
23	Dr.	K.A.D.S.	Jayarathna	Consultant Hematologist
24	Dr.	M.A.E.	Amarasena.	Consultant Hematologist (Acting)
25	Dr.	N.J	Ashanthi	Consultant Histopathologist
26	Dr.	E.K.D.M	Wickramarathna	Consultant Histopathologist
27	Dr.	M.P.G.N.S	Jayawardena	Consultant Histopathologist
28	Dr.	D.G	Punchihewa	Consultant Intensivist
29	Dr.	J.A.I.L	Jagoda	Consultant (ICU - Acting)
30	Dr.	E.G.U.N	Gunarathna	Consultant JMO
31	Dr.	R.N.D.	De Silva	Consultant Microbiologist
32	Dr.	J.R	Fonseka	Consultant Neonatologist
33	Dr.	M.V.D	Nawarathna	Consultant Neonatologist
34	Dr.	P.N.	Rajakrishna	Consultant Nephrologist
35	Dr.	B.A.	Sadath	Consultant Nephrologist
36	Dr.	A.D.M.	Gomaz	Consultant Neuro Surgeon
37	Dr.	M.M.R.S.	Paris	Consultant Neuro Surgeon (Acting)
38	Dr.	H.P.M.C.	Caldera	Consultant Neurologist
39	Dr.	S.C.	Weerasinghe	Consultant Neurologist
40	Dr.	P.L.S.	Pathberiya	Consultant Neurophysiologist
41	Dr.	K.M.S.	Kosgoda	Consultant OMF Surgeon
42	Dr.	C.	Dharmarathna	Consultant Oncologist
43	Dr.	J.P.U	Ekanayaka	Consultant Oncologist
44	Dr.	N.A.K.M.	Nettikumara	Consultant Oncologist
45	Dr.	S.K.G.S	Kurera	Consultant Ophthalmologist Surgeon
46	Dr.	J.M.	Subasinghe	Consultant Orthodontist
47	Dr.	D.K.S.J.	Chandrarathna	Consultant Orthopedic Surgeon
48	Dr.	K.	Sairam	Consultant Orthopedic Surgeon
49	Dr.	K.K.M.D.	Chandradasa	Consultant Paediatrician
50	Dr.	T.U.N.	De Silva	Consultant Paediatrician
51	Dr.	M.H.L.T.N	Mahanama	Consultant Paediatric Cardiology
52	Dr.	K.M.V.C	Bandara	Consultant Paediatric Nephrologist (Acting)
53	Dr.	K.P.M.S	Hemachandra	Consultant Paediatric Neuro Surgeon (Acting)
54	Dr.	A.S	Liyanage	Consultant Paediatric Surgeon
55	Dr.	K.P.G.	Dissanayaka	Consultant Physician
56	Dr.	K.A.S.D	Kulathunga	Consultant Physician
57	Dr.	R.M.S.K.	Rathnayake	Consultant Physician
58	Dr.	M.M.N.N.	Senevirathna	Consultant Physician
59	Dr.	W.M.R.L.	Welagedara	Consultant Physician
60	Dr.	W.G.S.G	Karunarathna	Consultant Physician
61	Dr.	M.I.M	Rifath	Consultant Physician
62	Dr.	M.M.	Senanayake	Consultant Physician ETU (Acting)

63	Dr. A.K.	Bandaranayake	Consultant Physician VP OPD
64	Dr. D.S.P.K.H	Premachandra	Consultant PICU (Acting)
65	Dr. S	Selvaganesh	Consultant Plastic Surgeon
66	Dr. R.P.S.S.	Rajapaksha	Consultant Psychiatrist
67	Dr. A.	Ellepola	Consultant Psychiatrist
68	Dr. K.G.	Dayarathna	Consultant Radiologist
69	Dr. S.P	Rubashingha	Consultant Radiologist
70	Dr. D.P.K	Samaraweera	Consultant Radiologist
71	Dr. Y.N.	Harischandra	Consultant Respiratory Physician
72	Dr. I.P.S	Gamage	Consultant Restorative Dentistry (Acting)
73	Dr. W.A.D.P.C	Wanigasekara	Consultant Rheumatologist
74	Dr. D.J.D	Jayasinghe	Consultant Surgeon
75	Dr. S.M.P	Manjula	Consultant Surgeon
76	Dr. B.P.N	Wijerathna	Consultant Surgeon (Acting)
77	Dr. B.M.V.C.	Bandaranayake	Consultant Surgical Oncologist
78	Dr. H.B.N.N.	Bandara	Consultant Transfusion Physician
79	Dr. N.	Liyanapathirana	Consultant Urological Surgeon
80	Dr. B.A.D	Rubathan	Consultant Vascular and Transplant Surgeon
81	Dr. K.B.K	Jayasiri	Consultant VOG
82	Dr. N.W.A.J.K.	Premadasa	Consultant VOG

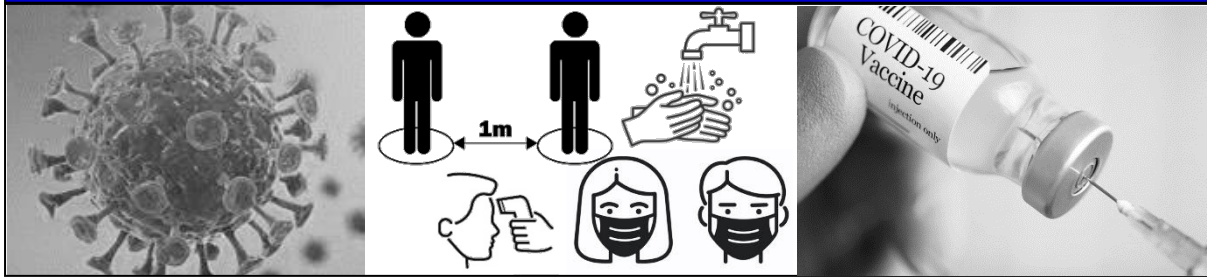
#### Professorial Unit Consultants:

1	Prof. S.H.	Siribaddana	Chair Professor of Medicine
2	Dr. S.D.	Pilapitiya	Consultant Physician
3	Dr. M.R.P.	Weerawansa	Consultant Physician
4	Dr. R.D.N.C.	Sarathchandra	Consultant Physician
5	Dr. A.M.A.H.M.S.	Senanayake	Consultant Physician
6	Dr. S.P.B.	Thalgaspitiya	Consultant General Surgeon
7	Dr. S.	Srishankar	Consultant General Surgeon
8	Dr. W.S.M.K.J.	Senanayake	Consultant General Surgeon (Acting)
9	Dr. A.B.	Jayathilake	Consultant General Surgeon (Acting)
10	Dr. N.P.	Hettigama	Consultant Obstetrician and Gynecologist
11	Dr. D.M.A.	Kumara	Consultant Obstetrician and Gynecologist
12	Dr. W.A.J.C.	Chandrakumara	Consultant Paediatrician
13	Dr. K.M.S.S.	Rathnasiri	Consultant Paediatrician
14	Dr. G.H.I.	Dharshika	Consultant Paediatrician (Acting)
15	Dr. G.G.G.T.	Amarakoon	Consultant Paediatrician (Acting)
16	Dr. L.L.	Amila Isuru	Consultant Psychiatrist
17	Dr. S.M.B.H.	Abeyratne	Consultant Psychiatrist (Acting)
18	Dr. K.A.D.L.P.	Kariyawasam	Consultant Anaesthetist

## **8.2 Field practice areas, Hospitals and Centers**

1. Base Hospital Dambulla
2. Base Hospital Matale
3. Base Hospital Thambuththegama
4. District Hospital Rambewa
5. Divisional Hospital Rajanganaya Yaya 5
6. Divisional Hospital Thammannawa
7. General Hospital Polonnaruwa
8. Medical Registrar Office, Anuradhapura
9. MOH Mihintale
10. MOH Nochchiyagama
11. MOH Nuwaragampalatha Central
12. MOH Nuwaragampalatha East
13. MOH Rajanganaya
14. MOH Thalawa
15. MOH Thirappane
16. Regional Director of Health Office, Anuradhapura
17. Water Treatment Plant, Thuruvila

## 9. PREPAREDNESS AND RESPONSE FOR COVID-19 OUTBREAK



**We are committed to supporting our students, staff and community members through this difficult time. We will continue to update you as we adapt to life and study during the COVID-19 pandemic.**

**To minimize the possible risk of spreading the coronavirus, students are advised to adhere to good health practices**

- Frequently clean hands by using soap and water or alcohol-based hand rub.
- When coughing and sneezing cover mouth and nose with tissue or handkerchief or with the flexed elbow. Used facial tissues to be discarded properly.
- Avoid frequent touching of face, nose, eyes and mouth.
- Avoid close contact with anyone who has fever and cough.
- If you have fever, cough and difficulty in breathing seek medical care at earliest.

Students are strongly advised to follow the safety precautions (including wearing face mask, hand hygiene, respiratory etiquette and maintain physical distancing) at all times irrespective of vaccination status. Moreover, students are strongly advised adhere to the health guidelines issued by Ministry of Health, Sri Lanka, UGC, Sri Lanka, and Faculty of Medicine & Allied Sciences, RUSL.

Faculty of Medicine & Allied Sciences has developed operational guidelines on preparedness and response for COVID-19 outbreak to ensure the safety of students and staff. These guidelines were prepared considering both the convenience and safety of students based on the available facilities and feasibilities to achieve national and international health standards. We, as a faculty, expect highly responsible behaviour from our students as budding doctors and responsible citizens of the country during this global tragedy.

**Please contact any academic staff member, student counselors, your mentor or Dr. PHG Janaka Pushpakumara, Head/Senior Lecturer in Family Medicine (+94 773 565 144) for further assistance or clarification.**

# ANNEXURE 1

## APPLICATION FORM FOR SPECIAL LEAVE

(For **all students** registered in the Faculty of Medicine and Allied Sciences, Rajarata University of Sri Lanka)

\*\* Includes: Leave for overseas travel

Any other leave of absence from academic activities for more than one week

1. Full name of applicant: .....
2. Registration No.: .....
3. National Identity Card No.: .....
4. Purpose for which the leave is applied for .....
5. Duration of leave requested: From ..... To .....
6. Are there academic activities scheduled for your batch, during the applied for period of leave: Yes/No
7. If Yes, give details of arrangements to cover academic activities (attach relevant letters).....
8. If No, provide proof by attaching a copy of the time table/academic schedule relevant to you for the specified period, certified by the Registrar.
9. I hereby declare that the information I have supplied in this form is correct.

Signature of the applicant: .....

Date: .....

For Office Use Only

Application accepted on: .....

Faculty Board Approval: Recommended/Not recommended

Date: .....

Signature of Dean: .....

Date:.....

Reference number:.....

Date stamp:

## ANNEXURE 2

### PROHIBITION OF RAGGING AND OTHER FORMS OF VIOLENCE IN EDUCATIONAL INSTITUTIONS

An act to eliminate ragging and other forms of violence, and cruel, inhuman and degrading treatment, from educational institutions

BE it enacted by the Parliament of the Democratic, Socialist Republic of Sri Lanka as follows:

29<sup>th</sup> April, 1998

- Short title. 1. This Act may be cited as the Prohibition of Ragging and Other Forms of Violence in Educational Institutions Act, No. 20 of 1998.
- Ragging. 2.
- (1) Any person who commits, or participates in; ragging, within or outside an educational institution, shall be guilty of an offence under this Act and shall on conviction after summary trial before a Magistrate be liable, to rigorous imprisonment for a term not exceeding two years and may also be ordered to pay compensation of an amount determined by court, to the person in respect of whom the offence was committed for the injuries caused to such person.
- (2) A person who, whilst committing ragging causes sexual harassment or grievous hurt to any student or a member of the staff, of an educational institution shall be guilty of an offence under this Act and shall on conviction after summary trial before a Magistrate be liable to imprisonment for a term not exceeding ten years and may -also be ordered to pay compensation of an amount determined by court, to the person in respect of whom the offence was committed for the injuries caused to such person.
- Criminal intimidation, 3. Any person who, within or outside an educational institution, threatens, verbally or in writing, to cause injury to the person, reputation or property of any student or a member of the staff, of all educational institution (in this section referred to as "the victim") or to the person, reputation or property of some other person in whom the victim is interested, with the intention of causing fear in the victim or of compelling the victim to do any act which the victim is not legally required to do, or to omit to do any act which the victim is entitled to do, shall be guilty of an offence under this Act and shall on conviction after summary trial before a Magistrate be liable to rigorous imprisonment for a term not exceeding five years.
- Hostage taking. 4. Any person who does any act by which the personal liberty and the freedom of movement of any student or a member of the staff of an educational institution or other person within such educational institution or any premises under the management and control of such educational institution, is restrained without lawful justification and for the purpose of forcing such student, member of the staff



or person to take a particular course of action, shall be guilty of an offence under this Act and shall on conviction after summary trial before a Magistrate, be liable to rigorous imprisonment for a term not exceeding seven years.

Wrongful restraint. 5. Any person who unlawfully obstructs any student or a member of the staff of an educational institution, in such a manner as to prevent such student or member of the staff from proceeding in any direction in which such student or member of the staff, has a right to proceed, shall be guilty of an offence under this Act and shall on conviction after summary trial before a Magistrate be liable to rigorous imprisonment for a term not exceeding seven years.

Unlawful confinement. 6. Any person who unlawfully restrains any student or a member of the staff of an educational institution in such a manner as to prevent such student or member of the staff from proceeding beyond certain circumscribing limits, shall be guilty of an offence under this Act and shall on conviction after summary trial before a Magistrate be liable to imprisonment for a term not exceeding seven years.

Forcible occupation and damage to property of an educational institution. 7.  
(1) Any person who, without lawful excuse, occupies, by force, any premises of, or under the management or control of, an educational institution shall be guilty of an offence under this Act, and shall on conviction after summary trial before a Magistrate be liable to imprisonment for a term not exceeding ten years or to a fine not exceeding ten thousand rupees or to both such imprisonment and fine.  
(2) Any person who causes mischief in respect of any property of, or under the management or control of, an educational institution shall be guilty of an offence under this Act and shall on conviction after summary trial before a Magistrate be liable to imprisonment for a term not exceeding twenty years and a fine of five thousand rupees or three times the amount of the loss or damage caused to such property, whichever amount is higher.

Orders of expulsion or dismissal. 8. Where a person is convicted of an offence under this Act, the court may, having regard to the gravity of the offence"  
(a) in any case where the person convicted is a student of an educational institution, order that such person be expelled from such institution ;  
(b) in any case where the person convicted is a member of the staff of an educational institution, order that such person be dismissed from such educational institution.

Bail. 9.  
(1) A person suspected or accused of committing an offence under subsection (2) of section 2 or section 4 of this Act shall not be released on bail except by the judge of a High Court established by Article 154P of the Constitution. In

exercising his discretion to grant bail such Judge shall have regard to the provisions of section 14 of the Bail Act, No. 30 of 1997.

(2) Where a person is convicted of an offence under subsection (2) of section 2 or section 4 of this Act, and an appeal is preferred against such conviction, the Court convicting such person may, taking into consideration the gravity of the offence and the antecedents of the person convicted, either release or refuse to release, such person on bail.

Certain Provisions of the Code of Criminal Procedure Act not to apply to persons convicted or found guilty of an offence under this Act.	10. Notwithstanding anything in the Code of Criminal Procedure Act, No, 15 of 1979”  (a) the provisions of section 303 of that Act shall not apply in the case of any person who is convicted,  (b) the provisions of section 306 of that Act shall not apply in the case of any person who pleads or is found guilty,  by or before any court of any offence under subsection (2) of section 2 or section 4 of this Act.
Offences under this Act deemed to be cognizable offences.	11. All offences under this Act shall be deemed to be cognizable Offences for the purposes of the application of the provisions of the Code of Criminal Procedure Act, No. 15 of 1979, notwithstanding anything contained in the First Schedule to that Act.
Certificate.	12. Where in any prosecution for an offence under this Act, a question arises whether any person is a student or a member of the staff of an educational institution or whether any premises or property is the property of, or is under the management and control of, an educational institution a certificate purporting to be under the hand of the head or other officer of such educational institution to the effect that the person named therein is a student or a member of the staff of such educational institution, or that the premises or property specified therein is the property of, or is under the management and control of, such educational institution, shall be admissible in evidence without proof of signature and shall be prima facie evidence of the facts stated therein.
Admissibility of statement in evidence.	13.  (1) If in the course, of a trial for an offence under this Act, any witness shall on any material point contradict either expressly or by necessary implication a statement previously given by him in the course of any investigation into such offence, it shall be lawful for the Magistrate if, after due inquiry into the circumstances in which the statement was made, he considers it safe and just ”

(a) to act upon the statement given by the witness in the course of the investigation, if such statement is corroborated in material particulars by evidence from an independent source; and

(b) to have such witness at the conclusion of such trial, tried before such court upon a charge for intentionally giving false evidence in a stage of a judicial proceeding,

(2) At any trial under paragraph (b) of subsection (1) it shall be sufficient to prove that the accused made the contradictory statements alleged in the charge and it shall not be necessary to prove which of such statements is false.

Provisions of this Act to be in addition to and not in derogation of the provisions of the Penal Code & c. 14. The provisions of this Act shall be in addition to and not in derogation of, the provisions of the Penal Code, the Convention Against Torture and Oilier Cruel, Inhuman or Degrading Treatment or Punishment Act, No. 22 of 1994 or any other law.

Priority for trials and appeals under this Act. 15. Every Court shall give priority to the trial of any person charged with any offence under this Act and to the bearing of any appeal from the conviction of any person for appeals under any such offence and any sentence imposed on such conviction.

Sinhala text to Prevail in case of inconsistency 17. In this Act unless the context otherwise requires " "criminal force", "fear", "force", "grievous hurt", "hurt" and "mischief shall have the respective meanings assigned to them in the Penal Code;

"educational institution" means –

(a) a Higher Educational Institution;

(b) any other Institution recognized under Chapter IV of the Universities Act, No, 16 of 1978;

(c) the Buddhist and Pali University established by the Buddhist and Pali University of Sri Lanka Act, No. 74 of 1981;

(d) the Buddha SravakaBhikku University, established by the Buddha SravakaBhikku University Act, No. 26 of 1996;

(e) any Institute registered under section 14 of the Tertiary and Vocational Education Act, No. 20 of 1990;

(f) any Advanced Technical Institute established under the Sri Lanka Institute- of Technical Education Act, No. 29 of 1995;

(g) a Pirivena registered under the Pirivena Education Act, No. 64 of 1979 and receiving grants from State funds and includes a Pirivena Training Institute established under that Act;

(h) the Sri Lanka Law College;

(i) the National Institute of Education established; by the National Institute of Education Act, No.

(j) the College of Education established by the: Colleges of Education Act, No. 30 of 1986, or a Training College;

(k) a Government school or an assisted school or an unaided school, within the meaning of the Education Ordinance (Chapter 185);

and includes any other institution established for the purpose of providing education, instruction or training;

“head of an educational institution” means the Vice- Cancellor, Mahopadyaya, Director, President, Principal or any other person howsoever designated charged with the administration and management of the affairs of such educational institution;

“Higher Educational institution” has the meaning assigned to it in the Universities Act, No. 16 of 1978;

“ragging” means any act which causes or is likely to cause physical or psychological injury or mental pain or: fear to a student or a member of the staff of an educational institution;

“student” means a student of an educational institution;

“sexual harassment” means the use of criminal force, words or actions to cause sexual annoyance or harassment to a student or a member of the staff, of an educational institution;

Faculty of Medicine and Allied Sciences  
Rajarata University of Sri Lanka  
Jaffna Road, Saliyapura  
Sri Lanka, 50008



Tel: (+94) 252234462

Fax: (+94) 252234464

Web: <http://www.rjt.ac.lk/med/>